

California Labor Market Review

Labor Force Trends
page 1

Unemployment Facts
page 2

Nonfarm Employment
page 5

Hours and Earnings
page 7

Industry Employment
page 8

Regional and County Data
page 10

Unemployment Rates
page 12

UI Program Data
page 16

DI Program Data
page 18

Glossary
page 20



California

Labor Market Review

December 2011

Quick Facts:

(Data are Seasonally Adjusted)

CA Unemployment Rate

December	2011	11.1%
November	2011	11.3%
December	2010	12.5%

U.S. Unemployment Rate

December	2011	8.5%
November	2011	8.7%
December	2010	9.4%

CA Nonfarm Employment

December	2011	14,199,000
Month Over Change		0.1%
Year Over Change		1.7%

The California unemployment rate was 11.1 percent in December, down 0.2 percentage point from the rate in November. California's nonfarm payrolls gained 10,700 jobs in December, following a revised 24,700-job gain in November. Professional and business services (up 13,400) gained the most jobs in December, while trade, transportation, and utilities (down 4,200) lost the most jobs among the major industry sectors. (Data are seasonally adjusted.)

California Labor Force Trends

(Thousands of Persons, Seasonally Adjusted)

LABOR FORCE STATUS	YEAR AGO	MONTH AGO	CURRENT	MONTH-OVER CHANGE		YEAR-OVER CHANGE	
	Dec 10	Nov 11	Dec 11	Number	Percent	Number	Percent
		<i>Revised</i>	<i>Preliminary</i>				
Population	28,444	28,723	28,744	21	0.1%	300	1.1%
Labor Force	18,151	18,182	18,219	37	0.2%	68	0.4%
Employment	15,878	16,125	16,198	73	0.5%	320	2.0%
Unemployment	2,273	2,058	2,021	-37	-1.8%	-252	-11.1%
Unemployment Rate (%)	12.5	11.3	11.1	-0.2	----	-1.4	----
LF Participation Rate (%)	63.8	63.3	63.4	0.1	----	-0.4	----

Note: All data are for the civilian, noninstitutional population, 16 years and older. "LF" is labor force. Data may not add due to rounding. The unemployment rate is calculated using unrounded data.

Source: EDD, Labor Market Information Division, BLS Labor Force Model.

U.S. Labor Force Trends

(Thousands of Persons, Seasonally Adjusted)

LABOR FORCE STATUS	YEAR AGO	MONTH AGO	CURRENT	MONTH-OVER CHANGE		YEAR-OVER CHANGE	
	Dec 10	Nov 11	Dec 11	Number	Percent	Number	Percent
		<i>Revised</i>	<i>Preliminary</i>				
Population	238,889	240,441	240,584	143	0.1%	1,695	0.7%
Labor Force	153,613	153,937	153,887	-50	0.0%	274	0.2%
Employment	139,220	140,614	140,790	176	0.1%	1,570	1.1%
Unemployment	14,393	13,323	13,097	-226	-1.7%	-1,296	-9.0%
Unemployment Rate (%)	9.4	8.7	8.5	-0.2	----	-0.9	----
LF Participation Rate (%)	64.3	64.0	64.0	0.0	----	-0.3	----

Note: All data are for the civilian, noninstitutional population, 16 years and older. "LF" is labor force. Data may not add due to rounding. The unemployment rate is calculated using unrounded data.

Source: U.S. Bureau of Labor Statistics, "U.S. Employment Situation" News Release, Table A-1.

Business Cycle Trends in California Labor Force

(Thousands of Persons, Seasonally Adjusted)

LABOR FORCE STATUS	EXPANSION PEAK (*)	RECESSION LOW (*)	CURRENT MONTH	CALIFORNIA CHANGE DURING U.S. RECESSION		CALIFORNIA CHANGE DURING U.S. EXPANSION	
	Dec 07	Jun 09	Dec 11	Number	Percent	Number	Percent
			<i>Preliminary</i>				
Population	27,426	27,924	28,744	498	1.8%	820	2.9%
Labor Force	18,067	18,224	18,219	157	0.9%	-5	0.0%
Employment	17,019	16,135	16,198	-884	-5.2%	63	0.4%
Unemployment	1,049	2,090	2,021	1,041	99.2%	-69	-3.3%
Unemployment Rate (%)	5.8	11.5	11.1	5.7	----	-0.4	----
LF Participation Rate (%)	65.9	65.3	63.4	-0.6	----	-1.9	----

(*) Date of expansion peak and recession low are those established by the National Bureau of Economic Research.

Note: All data are for the civilian, noninstitutional population, 16 years and older. "LF" is labor force. Data may not add due to rounding. The unemployment rate is calculated using unrounded data.

Source: EDD, Labor Market Information Division, BLS Labor Force Model.

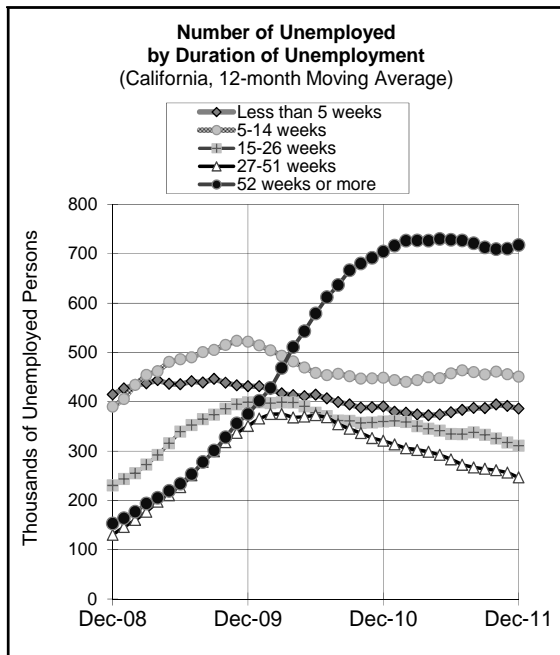
Inside this issue:

Labor Force Trends	1
Unemployment Facts	2
Nonfarm Employment	5
Hours and Earnings	7
Industry Employment	8
Regional and County	10
Unemployment Rates	12
U.I. Program Data	16
D.I. Program Data	18
Glossary	20

California Labor Market Review is a monthly publication of the California employment Development Department's Labor Market Information Division (LMID). For additional labor market information and this publication in PDF, please visit LMID's website at:

www.labormarketinfo.edd.ca.gov

Unemployment Rate Gap Between California and U.S.



- California's seasonally adjusted unemployment rate was 11.1 percent in December, down 0.2 percentage point from the rate in November, and down 1.4 percentage points from one year ago.
- In comparison, the U.S. unemployment rate was 8.5 percent in December, down 0.2 percentage point from November, and down 0.9 percentage point from one year ago.
- Civilian employment increased by 73,000 in December to 16,198,000 persons, following an increase of 117,000 in November. On a year-over basis, civilian employment was up 320,000 persons (2.0 percent).
- Unemployment decreased by 37,000 in December to 2,021,000. This followed a decrease of 64,000 persons in November. The number of unemployed was down 252,000 persons (11.1 percent) from December 2010. Over the year, the California civilian labor force was up 68,000 persons (0.4 percent) in December 2011.

Employment Status and Unemployment Rates Vary Among Demographic Groups

By race and ethnicity, the December 2011 unemployment rate for blacks was 19.6 percent, Hispanics 13.8 percent, and whites 11.3 percent. Over the month, the unemployment rate of whites and Hispanics decreased by 0.1 percentage point each. Blacks recorded no over the month change in unemployment rate in December.

By age group, the unemployment rate was highest for Californians aged 16-19 years, at 35.2 percent, up 0.6 percentage point over the month. The rates for the five age groups between 20 and 64 years ranged from 9.3 percent to 17.6 percent. Over the month, the age group of 35-44 years experienced a 0.2 percentage point decline in unemployment rate. Those aged 25-34 years, 45-54 years, and 55-64 years each experienced a 0.1 percentage point decline in unemployment rate. The age group of 20-24 years experienced no change in unemployment rate in December.

Employment Status by Demographic Group, California

(Data are Not Seasonally Adjusted, 12-month Moving Average)

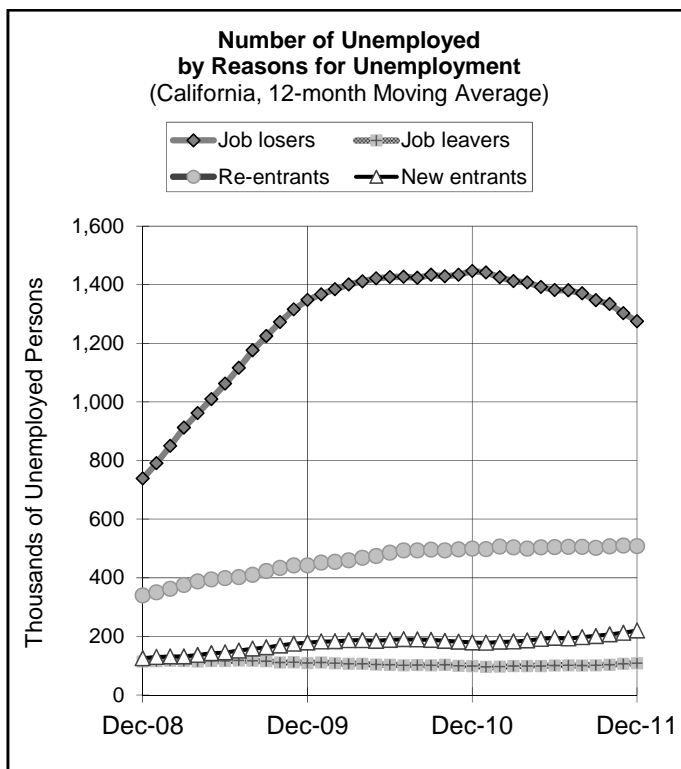
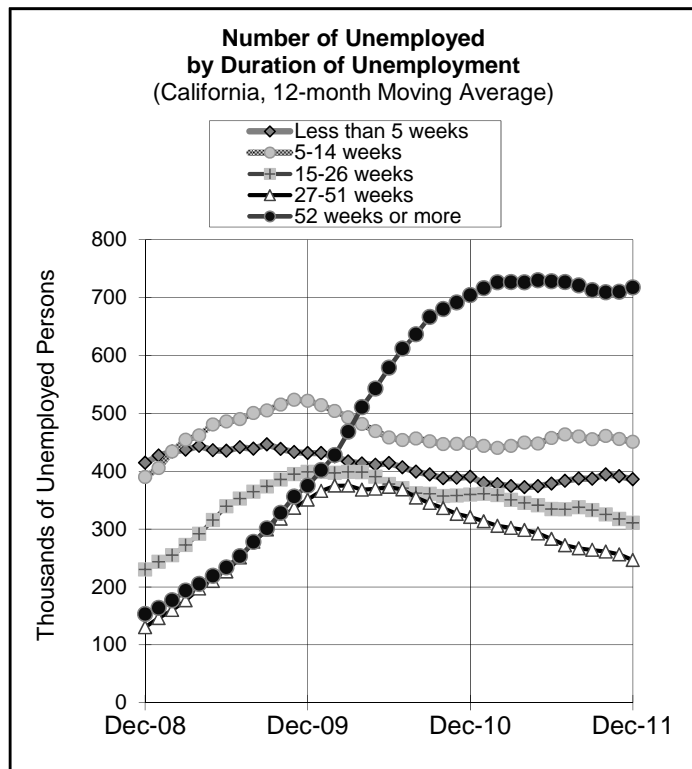
Employment Status	Dec-10	Oct-11	Nov-11	Dec-11
(Number in Thousands)				
Total, Age 16+				
Labor Force	18,232	18,116	18,131	18,230
Employed	16,008	15,966	16,000	16,118
Unemployed	2,224	2,151	2,130	2,111
Unemployment Rate	12.2%	11.9%	11.8%	11.6%
Male, Age 16+				
Labor Force	10,019	10,006	10,023	10,021
Employed	8,722	8,784	8,817	8,832
Unemployed	1,296	1,222	1,205	1,188
Unemployment Rate	12.9%	12.2%	12.0%	11.9%
Female, Age 16+				
Labor Force	8,213	8,110	8,108	8,126
Employed	7,285	7,182	7,183	7,203
Unemployed	928	929	925	923
Unemployment Rate	11.3%	11.5%	11.4%	11.4%
Both Sexes, Age 16-19				
Labor Force	586	567	564	564
Employed	385	375	369	366
Unemployed	202	192	195	198
Unemployment Rate	34.4%	33.9%	34.6%	35.2%
White, Age 16+				
Labor Force	14,084	13,992	14,024	14,038
Employed	12,411	12,384	12,427	12,456
Unemployed	1,673	1,608	1,597	1,582
Unemployment Rate	11.9%	11.5%	11.4%	11.3%
Nonwhite, Age 16+				
Labor Force	4,148	4,124	4,107	4,192
Employed	3,597	3,581	3,574	3,662
Unemployed	551	543	533	530
Unemployment Rate	13.3%	13.2%	13.0%	12.6%

Note: The sum of employment and unemployment may not exactly add to the amount of labor force, due to rounding on a 12-month moving average.

Source: U.S. Bureau of Labor Statistics, Current Population Survey.

California Unemployment by Reason and Duration

- Job losers comprised the largest group of unemployed persons categorized by reason (1,275,000 persons or 60.4 percent of all unemployed). Labor force re-entrants were the next largest reason group, accounting for 508,000 unemployed persons in December.
- By duration, the largest group of unemployed persons is those who had been unemployed 52 weeks or more (718,000 persons or 34.0 percent of all unemployed). The next largest group is those who had been unemployed 5 to 14 weeks (451,000 persons or 21.3 percent of all unemployed). The number of persons unemployed 52 weeks or more has increased by 14,000 (1.9 percent) since December 2010.



Unemployment by Duration, California							
(Number and Percent of Persons Unemployed, 12-month Moving Average)							
DURATION	YEAR AGO	MONTH AGO	CURRENT	MONTH-OVER CHANGE		YEAR-OVER CHANGE	
	Dec 10	Nov 11	Dec 11	Number	Percent	Number	Percent
Number (1,000s)	2,224	2,130	2,111	-19	-0.9%	-112	-5.1%
Less than 5 weeks	391	391	386	-5	-1.3%	-4	-1.1%
5 to 14 weeks	449	456	451	-5	-1.1%	2	0.5%
15 to 26 weeks	360	317	311	-7	-2.1%	-49	-13.6%
27 to 51 weeks	321	256	246	-10	-3.8%	-74	-23.2%
52 weeks and over	704	710	718	8	1.1%	14	1.9%
Percent of Unemployed (%)							
Less than 5 weeks	17.6%	18.4%	18.3%	-0.1	----	0.7	----
5 to 14 weeks	20.2%	21.4%	21.3%	-0.1	----	1.1	----
15 to 26 weeks	16.2%	14.9%	14.7%	-0.2	----	-1.5	----
27 to 51 weeks	14.4%	12.0%	11.7%	-0.3	----	-2.7	----
52 weeks and over	31.7%	33.3%	34.0%	0.7	----	2.3	----

Note: Detail may not add to total due to rounding.

Source: U.S. Bureau of Labor Statistics, Current Population Survey.

Full-time and Part-time Employment; Persons Not in the Labor Force

- The majority (78.7 percent) of employed Californians usually work full time (35 hours or more per week in all jobs).
- There were 1,420,000 persons who worked part time involuntarily, also known as "part time for economic reasons." They comprised 8.9 percent of all persons at work during the survey week. The number of persons who worked part time for economic reasons decreased 85,000 (5.6 percent) from December 2010.
- Persons not in the labor force increased by 5,000 (0.0 percent) in December to 10,458,000. Over the past year, the number of persons not in the labor force increased by 340,000. The number of persons who are not in the labor force but want a job increased by 15,000 (1.6 percent) to 950,000 since December 2010.

Full-time and Part-time Employment, California							
(Number and Percent of Employed Persons, 12-month Moving Average)							
WORK SCHEDULE	YEAR AGO	MONTH AGO	CURRENT	MONTH-OVER CHANGE		YEAR-OVER CHANGE	
	Dec 10	Nov 11	Dec 11	Number	Percent	Number	Percent
Number (1,000s)	16,008	16,000	16,035	35	0.2%	27	0.2%
Usual Work Week Schedule							
Usually full time	12,578	12,569	12,614	44	0.4%	36	0.3%
Usually part time	3,430	3,431	3,422	-9	-0.3%	-9	-0.3%
Percent of Employed (%)							
Usually full time	78.6%	78.6%	78.7%	0.1	----	0.1	----
Usually part time	21.4%	21.4%	21.3%	-0.1	----	-0.1	----
Part-time For Economic Reasons							
At work part time for economic reasons	1,505	1,440	1,420	-20	-1.4%	-85	-5.6%
... usually full time, at work part time	363	310	303	-7	-2.2%	-61	-16.7%
... usually part time, at work part time	1,141	1,131	1,117	-14	-1.2%	-24	-2.1%
Percent of Employed (%)							
At work part time for economic reasons	9.4%	9.0%	8.9%	-0.1	----	-0.5	----
... usually full time, at work part time	2.3%	1.9%	1.9%	0.0	----	-0.4	----
... usually part time, at work part time	7.1%	7.1%	7.0%	-0.1	----	-0.1	----

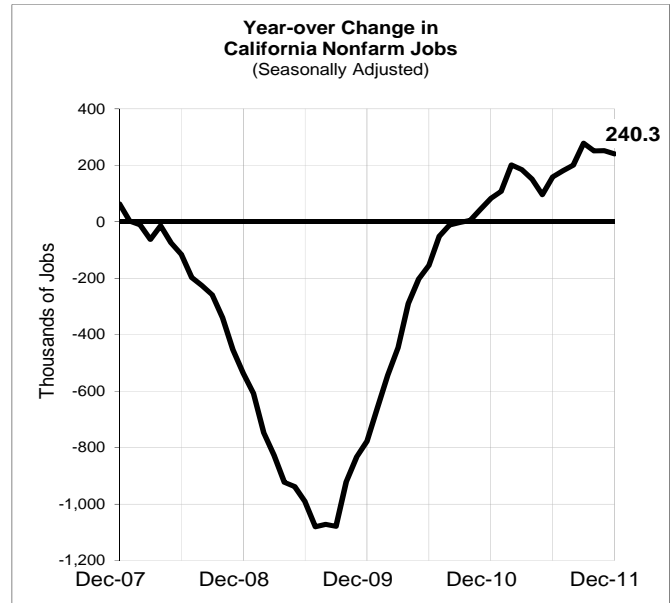
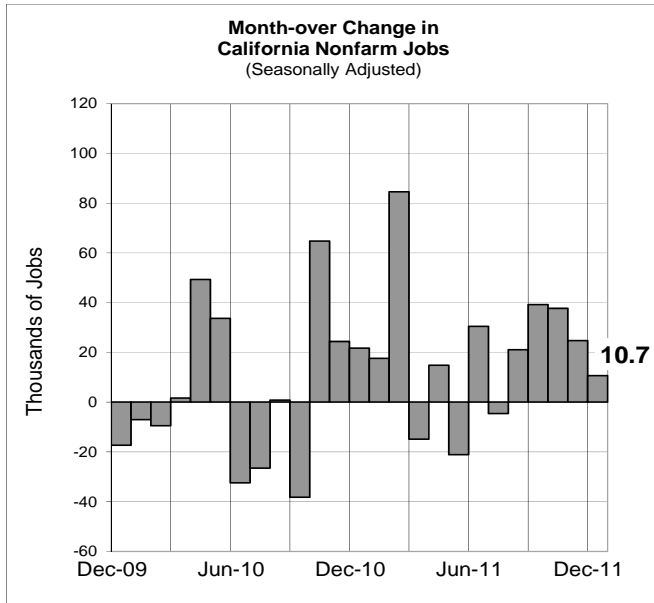
Note: Detail may not add to total due to rounding. In all jobs, full time is 35 or more hours per week; part time is less than 35 hours. Among those who usually work full time, working part time for economic reasons consists mainly of persons citing "slack work," because there is insufficient demand for the employer's goods and services to support more work hours. Among those usually working part time, the most often stated reason for working part time for economic reasons was "inability to find full time work." The number includes those who cite such a reason for working part time only if the person actually worked part time during the survey week.
Source: EDD, Labor Market Information Division, BLS Model and Current Population Survey (CPS).

Persons Not in the Labor Force, California							
(Number and Percent of Persons Not in the Labor Force, 12-month Moving Average)							
DISCOURAGEMENT	YEAR AGO	MONTH AGO	CURRENT	MONTH-OVER CHANGE		YEAR-OVER CHANGE	
	Dec 10	Nov 11	Dec 11	Number	Percent	Number	Percent
Number (1,000s)							
Not in the labor force...	10,118	10,453	10,458	5	0.0%	340	3.4%
... but want a job	935	948	950	2	0.2%	15	1.6%
... and searched recently	480	457	460	3	0.7%	-20	-4.2%
... and available to work	391	375	377	3	0.7%	-13	-3.4%
... and discouraged	175	148	144	-4	-2.8%	-31	-17.8%
Percent of NILF (%)							
Want a job	9.2%	9.1%	9.1%	0.0	----	-0.1	----
... and searched recently	4.7%	4.4%	4.4%	0.0	----	-0.3	----
... and available to work	3.9%	3.6%	3.6%	0.0	----	-0.3	----
... and discouraged	1.7%	1.4%	1.4%	0.0	----	-0.3	----

Note: "NILF" is "not in the labor force." Detail may not add to total due to rounding. "Searched recently" means in the past 12 months. "Discouraged" are, specifically, those persons not currently looking for work because they are discouraged over job prospects.
Source: U.S. Bureau of Labor Statistics, Current Population Survey.

Nonfarm Payroll Employment

Statewide there were 14,199,000 jobs in total nonfarm industries in December, an increase of 10,700 from last month. This followed a revised 24,700 job gain in November and 37,700 job increase in October.



- Nationwide, nonfarm payrolls were up 200,000 jobs over the month and up 1,640,000 jobs (1.3 percent) over the year. In comparison, California jobs were up 10,700 (0.1 percent) over the month and up 240,300 jobs (1.7 percent) since December 2010.
- Nonfarm payrolls in California have grown over the past year in eight sectors: information (5.3 percent); construction (3.9 percent); professional and business services (3.0 percent); mining and logging (2.7 percent); educational and health services (2.3 percent); leisure and hospitality (1.8 percent); trade, transportation, and utilities (1.4 percent); and government (1.4 percent).
- Private sector employment in California, which excludes government, increased 9,200 jobs over the month. Over the last year, California private payroll employment increased by 206,800 jobs (1.8 percent).

California Nonfarm Payroll Employment by Industry Sector							
(Thousands of Jobs, Seasonally Adjusted)							
	YEAR AGO	MONTH AGO	CURRENT	MONTH-OVER CHANGE		YEAR-OVER CHANGE	
	Dec 10	Nov 11	Dec 11	Number	Percent	Number	Percent
		<i>Revised</i>	<i>Preliminary</i>				
Total Nonfarm	13,958.7	14,188.3	14,199.0	10.7	0.1%	240.3	1.7%
Mining and Logging	26.4	27.7	27.1	-0.6	-2.2%	0.7	2.7%
Construction	550.3	566.8	571.6	4.8	0.8%	21.3	3.9%
Manufacturing	1,245.4	1,243.5	1,241.0	-2.5	-0.2%	-4.4	-0.4%
Trade, Transp. & Utilities	2,621.3	2,661.8	2,657.6	-4.2	-0.2%	36.3	1.4%
Information	442.5	462.2	465.8	3.6	0.8%	23.3	5.3%
Financial Activities	761.7	759.9	759.3	-0.6	-0.1%	-2.4	-0.3%
Profess. & Business Serv.	2,106.0	2,156.1	2,169.5	13.4	0.6%	63.5	3.0%
Educational & Health Serv.	1,813.0	1,855.0	1,855.6	0.6	0.0%	42.6	2.3%
Leisure & Hospitality	1,511.1	1,541.5	1,538.1	-3.4	-0.2%	27.0	1.8%
Other Services	483.5	484.3	482.4	-1.9	-0.4%	-1.1	-0.2%
Government	2,397.5	2,429.5	2,431.0	1.5	0.1%	33.5	1.4%

Data may not add due to rounding.

Source: EDD, Labor Market Information Division, Current Employment Statistics (CES) Program.

California Labor Force and Job Numbers, Most Recent 8 Months

(Employment and Unemployment, Thousands of Persons)
(Nonfarm Payroll Employment, Thousands of Jobs)

	May 11	Jun 11	Jul 11	Aug 11	Sep 11	Oct 11	Nov 11	Dec 11
Not Seasonally Adjusted								
Working-aged Population	28,562	28,588	28,613	28,642	28,670	28,697	28,723	28,744
Labor force	17,990	18,069	18,129	18,116	18,165	18,219	18,186	18,172
Employment	15,938	15,889	15,875	15,959	16,098	16,172	16,208	16,185
Unemployment	2,052	2,181	2,255	2,157	2,067	2,048	1,978	1,987
Unemployment Rate	11.4	12.1	12.4	11.9	11.4	11.2	10.9	10.9
LF Participation Rate	63.0	63.2	63.4	63.2	63.4	63.5	63.3	63.2
Total Nonfarm	14,079.6	14,132.5	13,993.1	14,025.5	14,126.5	14,239.8	14,305.6	14,320.1
Total Private	11,647.3	11,709.3	11,703.1	11,730.1	11,759.8	11,799.8	11,847.1	11,874.1
Mining and Logging	27.0	27.7	28.5	28.7	28.7	28.7	28.4	26.9
Construction	562.3	573.9	583.3	584.6	584.7	583.0	578.2	571.1
Manufacturing	1,246.6	1,257.6	1,265.3	1,274.2	1,268.6	1,258.1	1,244.8	1,241.2
Trade, Transportation and Utilities	2,626.9	2,632.9	2,638.0	2,647.4	2,653.1	2,659.0	2,714.0	2,734.6
Information	452.9	454.0	455.1	456.7	454.5	456.7	462.2	465.8
Financial Activities	757.4	757.3	757.0	753.9	754.1	759.9	759.3	763.4
Professional and Business Services	2,116.8	2,135.3	2,131.6	2,142.8	2,161.7	2,175.7	2,173.7	2,188.5
Educational and Health Services	1,837.1	1,823.5	1,800.4	1,801.3	1,827.5	1,859.2	1,874.3	1,872.2
Leisure and Hospitality	1,533.9	1,555.9	1,557.9	1,558.9	1,544.1	1,534.2	1,529.6	1,530.6
Other Services	486.4	491.2	486.0	481.6	482.8	485.3	482.6	479.8
Government	2,432.3	2,423.2	2,290.0	2,295.4	2,366.7	2,440.0	2,458.5	2,446.0
Seasonally Adjusted								
Working-aged Population	28,562	28,588	28,613	28,642	28,670	28,697	28,723	28,744
Labor force	18,063	18,043	18,014	18,006	18,067	18,130	18,182	18,219
Employment	15,947	15,910	15,848	15,831	15,916	16,008	16,125	16,198
Unemployment	2,116	2,133	2,167	2,175	2,151	2,122	2,058	2,021
Unemployment Rate	11.7	11.8	12.0	12.1	11.9	11.7	11.3	11.1
LF Participation Rate	63.2	63.1	63.0	62.9	63.0	63.2	63.3	63.4
Total Nonfarm	14,039.8	14,070.2	14,065.6	14,086.7	14,125.9	14,163.6	14,188.3	14,199.0
Total Private	11,655.3	11,684.2	11,685.7	11,690.5	11,717.4	11,737.7	11,758.8	11,768.0
Mining and Logging	27.2	27.2	27.5	27.7	27.6	27.6	27.7	27.1
Construction	566.1	564.1	565.1	559.3	565.7	568.8	566.8	571.6
Manufacturing	1,252.9	1,257.4	1,257.1	1,257.2	1,254.2	1,252.2	1,243.5	1,241.0
Trade, Transportation, and Utilities	2,649.4	2,641.9	2,639.2	2,646.9	2,649.3	2,645.6	2,661.8	2,657.6
Information	452.9	454.0	455.1	456.7	454.5	456.7	462.2	465.8
Financial Activities	757.4	757.7	756.5	752.5	752.8	757.9	759.9	759.3
Professional and Business Services	2,120.4	2,135.5	2,136.7	2,142.8	2,157.1	2,163.5	2,156.1	2,169.5
Educational and Health Services	1,825.8	1,832.8	1,836.8	1,838.4	1,840.5	1,846.6	1,855.0	1,855.6
Leisure and Hospitality	1,522.3	1,530.6	1,529.1	1,527.9	1,532.7	1,534.2	1,541.5	1,538.1
Other Services	480.9	483.0	482.6	481.1	483.0	484.6	484.3	482.4
Government	2,384.5	2,386.0	2,379.9	2,396.2	2,408.5	2,425.9	2,429.5	2,431.0

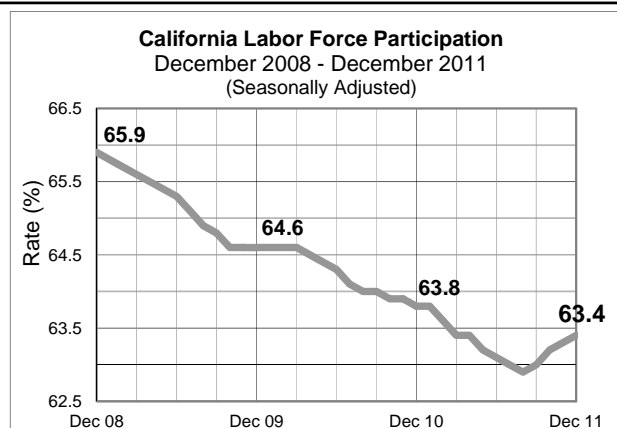
Data for current month are preliminary.

Source: EDD, Labor Market Information Division, Current Economic Statistics Group.

Labor Force Participation Rates

The Labor Force Participation Rate (LFPR) is the civilian labor force expressed as a percentage of the civilian noninstitutional population.

California's LFPR increased 0.1 percentage point in December to 63.4.



Manufacturing Payrolls and Hours and Earnings

On a seasonally adjusted basis, manufacturing payrolls lost 2,500 jobs in December. This follows a loss of 8,700 jobs in November.

On an unadjusted basis, manufacturing lost 3,600 jobs in December. Durable goods lost 200 jobs in December after losing 1,600 jobs in November. Nondurable goods lost 3,400 jobs in December after losing 11,700 jobs in November. Of the 20 industries in manufacturing, 11 showed decreases, five showed increases, and four showed no change in employment over the month. The largest job change was in food manufacturing, decreasing 2,800 jobs. Over the year, manufacturing lost 4,500 jobs.

Manufacturing hours were up in December while earnings remained the same. Average weekly earnings went up to \$822.35, an increase of \$10.30 from November, and average hourly earnings were up 25 cents to \$19.96. Average weekly hours for California production workers in manufacturing were unchanged at 41.2 in December, and average weekly overtime hours were unchanged at 3.8 hours.

CALIFORNIA HOURS AND EARNINGS IN MANUFACTURING PRODUCTION WORKERS IN MANUFACTURING

	JAN	FEB	MAR	APR	MAY	JUN	JUL	AUG	SEP	OCT	NOV	DEC	AVG
AVERAGE WEEKLY HOURS IN MANUFACTURING													
2005	39.7	39.7	39.9	39.8	39.9	39.7	39.6	40.1	40.3	40.6	40.1	39.8	39.9
2006	39.8	40.0	40.0	40.0	40.1	40.5	40.2	40.3	40.4	40.6	40.4	41.2	40.3
2007	40.2	40.0	40.2	40.4	40.5	40.7	40.7	40.9	40.9	40.7	40.8	40.9	40.6
2008	40.0	40.6	40.9	41.2	40.8	40.9	40.7	40.6	40.6	40.8	40.6	40.6	40.7
2009	39.6	37.5	38.9	38.4	38.9	39.1	39.2	39.8	39.5	39.9	40.5	40.4	39.3
2010	39.7	39.2	39.6	39.9	40.2	40.0	40.1	40.2	39.9	40.3	40.4	40.9	40.0
2011	40.8	40.7	40.9	40.7	41.3	41.3	40.9	41.2	41.3	41.8	41.2	41.2	41.1

AVERAGE HOURLY EARNINGS IN MANUFACTURING

2005	15.59	15.62	15.61	15.63	15.69	15.72	15.76	15.72	15.72	15.75	15.72	15.87	15.70
2006	15.67	15.67	15.64	15.67	15.69	15.74	15.80	15.78	15.80	15.89	15.90	16.00	15.77
2007	16.12	16.13	16.18	16.21	16.26	16.23	16.25	16.28	16.35	16.44	16.46	16.48	16.28
2008	16.56	16.54	16.60	16.65	16.62	16.68	16.69	16.69	16.94	17.01	17.17	17.33	16.79
2009	17.43	17.46	17.64	17.72	17.68	17.77	17.68	17.67	17.82	18.02	18.42	18.47	17.82
2010	18.51	18.70	18.87	18.90	18.98	19.00	18.86	18.90	19.12	19.07	19.11	19.20	18.94
2011	19.33	19.31	19.26	19.63	19.54	19.37	19.40	19.29	19.44	19.52	19.71	19.96	19.48

AVERAGE WEEKLY EARNINGS IN MANUFACTURING

2005	618.92	620.11	622.84	622.07	626.03	624.08	624.10	630.37	633.52	639.45	630.37	631.63	626.96
2006	623.67	626.80	625.60	626.80	629.17	637.47	635.16	635.93	638.32	645.13	642.36	659.20	635.47
2007	648.02	645.20	650.44	654.88	658.53	660.56	661.38	665.85	668.72	669.11	671.57	674.03	660.69
2008	662.40	671.52	678.94	685.98	678.10	682.21	679.28	677.61	687.76	694.01	697.10	703.60	683.21
2009	690.23	654.75	686.20	680.45	687.75	694.81	693.06	703.27	703.89	719.00	746.01	746.19	700.47
2010	734.85	733.04	747.25	754.11	763.00	760.00	756.29	759.78	762.89	768.52	772.04	785.28	758.09
2011	788.66	785.92	787.73	798.94	807.00	799.98	793.46	794.75	802.87	815.94	812.05	822.35	800.80

AVERAGE WEEKLY OVERTIME HOURS IN MANUFACTURING

2005	4.2	4.2	4.3	4.3	4.3	4.3	4.3	4.8	4.7	4.6	4.5	4.5	4.4
2006	4.0	4.2	4.3	4.2	4.3	4.4	4.3	4.2	4.2	4.4	4.3	4.5	4.3
2007	3.9	3.5	3.8	3.7	3.9	4.1	4.0	4.1	4.3	4.2	4.1	4.1	4.0
2008	3.5	3.7	3.9	4.0	3.7	3.8	3.8	3.9	4.0	3.9	3.5	3.6	3.8
2009	2.8	2.6	2.8	2.7	2.9	3.0	2.8	3.3	3.4	3.4	3.8	3.7	3.1
2010	3.6	3.2	3.5	3.7	3.8	3.8	3.5	3.9	3.9	4.3	4.6	4.7	3.9
2011	4.2	4.0	4.1	4.2	4.2	4.1	4.0	4.0	4.1	4.0	3.8	3.8	4.0

Note: Average hours and earnings are based upon data for full-time and part-time production and related workers in manufacturing industries. Average gross weekly and hourly earnings include overtime pay and premium wages for late-shift work. These are not wage rates but are averages of gross earnings. Data are preliminary and are subject to change.

Source: EDD, Labor Market Information Division, Current Economic Statistics Group.

Hours and Earnings at a Glance

Average Weekly Earnings			Average Hours Per Week			Average Hourly Earnings		
DEC 2010	NOV 2011	DEC 2011	DEC 2010	NOV 2011	DEC 2011	DEC 2010	NOV 2011	DEC 2011
\$785.28	\$812.05	\$822.35	40.9	41.2	41.2	\$19.20	\$19.71	\$19.96

Five Sectors Gained Jobs, Six Lost in December

Within nonfarm industries, five sectors saw month-over job gains and six sectors saw a month-over job decline. The sectors with increased employment in December were: professional and business services (13,400); construction (4,800); information (3,600); government (1,500); and educational and health services (600). Sectors that lost jobs in December were trade, transportation, and utilities (4,200); leisure and hospitality (3,400); manufacturing (2,500); other services (1,900); financial activities (600); and mining and logging (600).

Industry Sector Highlights

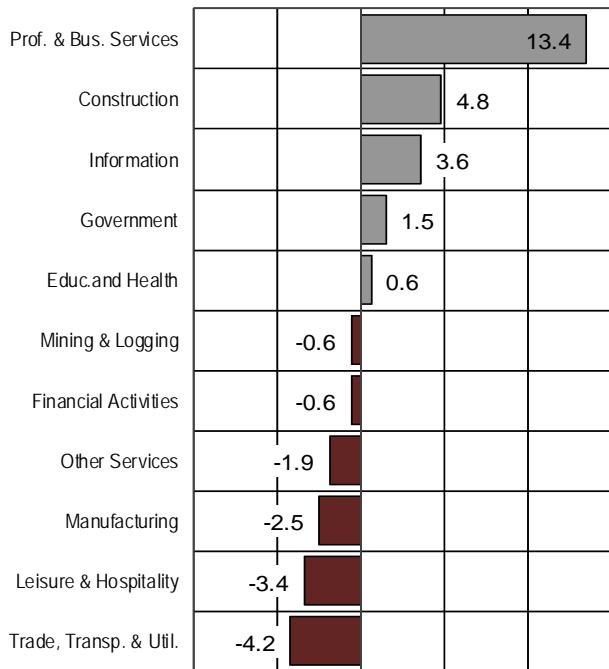
- Mining and logging payrolls lost 600 jobs in December. This followed a gain of 100 in November. Over the year, sector employment was up by 700 jobs (2.7 percent).
- Construction payrolls increased 4,800 jobs in December. This followed a 2,000 job loss in November. Over the year, sector employment was up by 21,300 jobs (3.9 percent).
- Manufacturing payrolls decreased 2,500 jobs in December. This followed an 8,700 job loss in November. Over the year, sector employment was down by 4,400 jobs (0.4 percent).
- Trade, transportation, and utilities payrolls decreased 4,200 jobs in December. This followed a 16,200 job gain in November. Over the year, sector employment was up by 36,300 jobs (1.4 percent).
- Information payrolls increased 3,600 jobs in December. This followed a 5,500 job increase in November. Over the year, sector employment was up by 23,300 jobs (5.3 percent).
- Financial activities payrolls decreased 600 jobs in December. This followed a 2,000 job gain in November. Over the year, sector employment was down by 2,400 jobs (0.3 percent).
- Professional and business services payrolls were up 13,400 jobs in December. This followed a 7,400 job decrease in November. Over the year, sector employment was up by 63,500 jobs (3.0 percent).
- Educational and health services payrolls increased 600 jobs in December. This followed an 8,400 job increase in November. Over the year, sector employment was up by 42,600 jobs (2.3 percent).
- Leisure and hospitality payrolls were down 3,400 jobs in December. This followed a 7,300 job increase in November. Over the year, sector employment was up by 27,000 jobs (1.8 percent).
- Other services payrolls were down 1,900 jobs in December. This followed a 300 job loss in November. Over the year, sector employment was down by 1,100 jobs (0.2 percent).
- Government payrolls increased by 1,500 jobs in December. This followed a 3,600 job gain in November. Over the year, sector employment was up by 33,500 jobs (1.4 percent).

Comparisons of Job Growth in California Industry Sectors

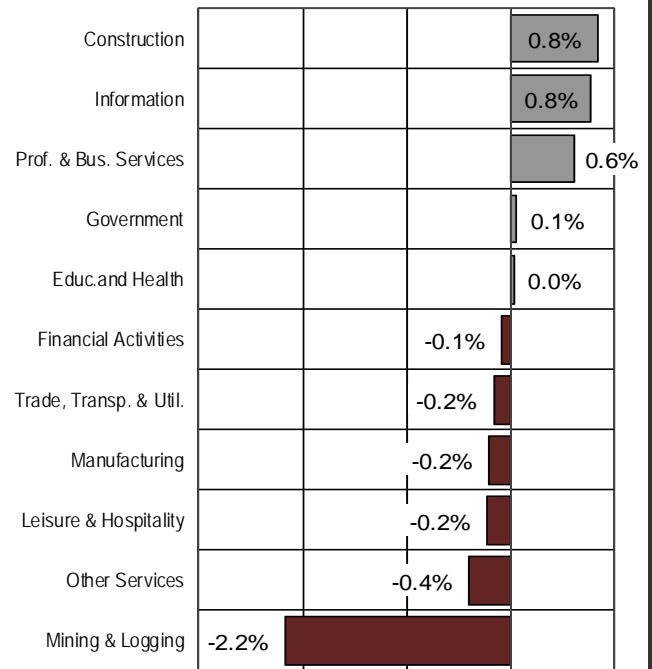
(Seasonally Adjusted, December 2011)

MONTH-OVER CHANGE

Thousands of Jobs

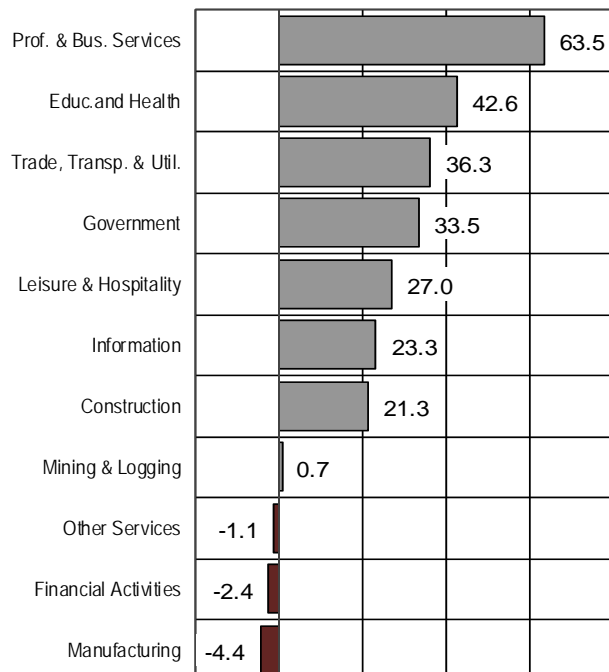


Percent Change

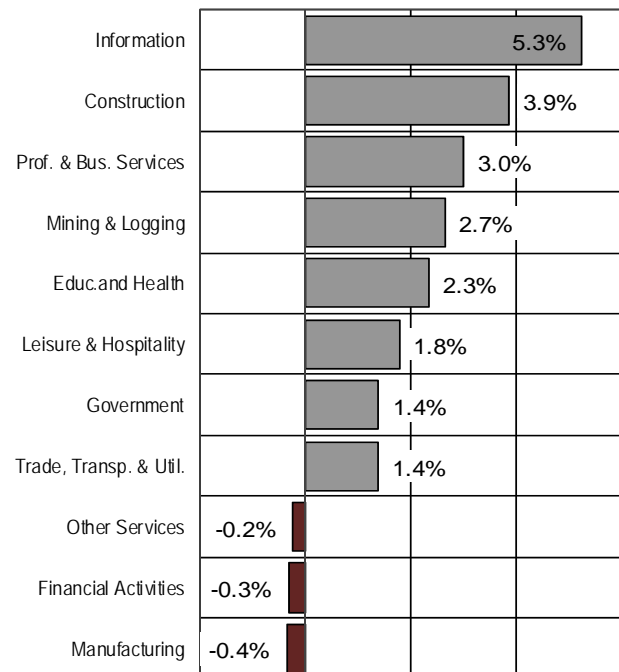


YEAR-OVER CHANGE

Thousands of Jobs

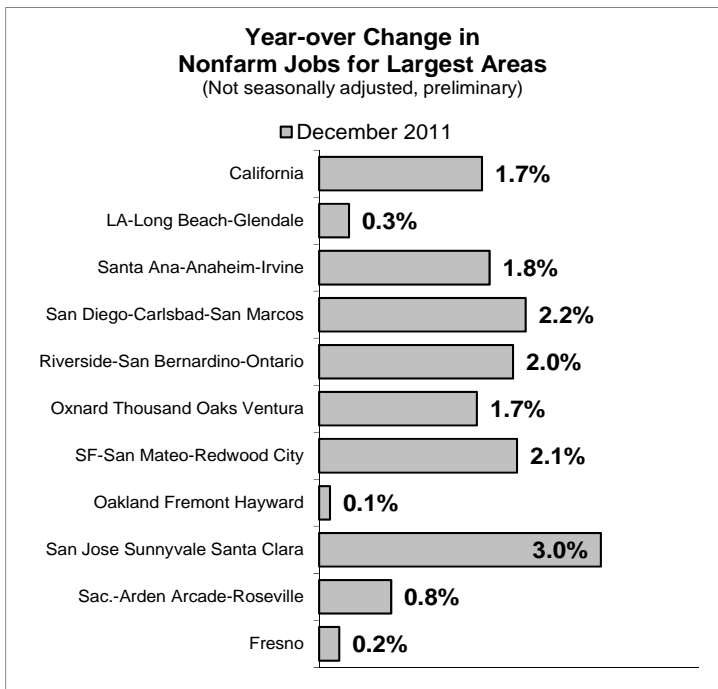
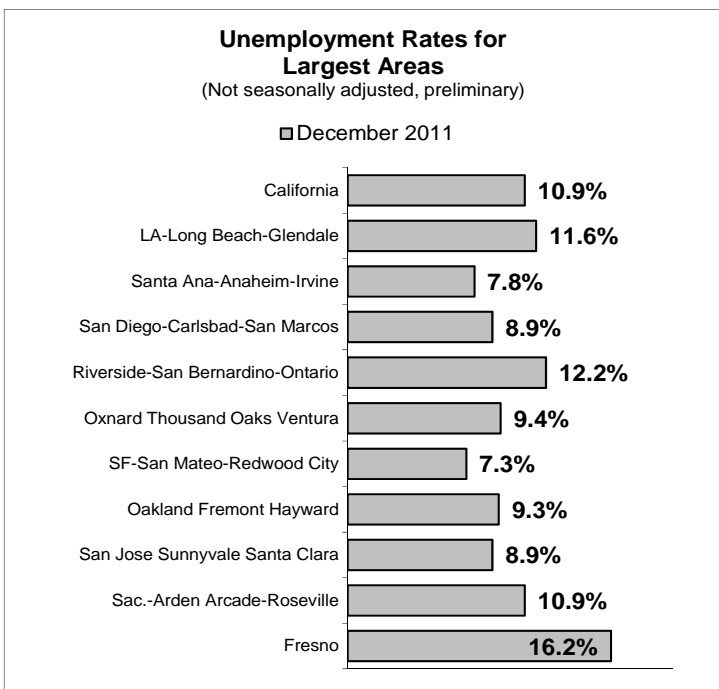


Percent Change



California Area Trends

- The lowest unemployment rate among California counties in December was 6.5 percent in Marin. Other counties with rates below 8.0 percent in December were San Mateo (7.2 percent), San Francisco (7.6 percent), and Orange (7.8 percent). In all, 17 counties had rates below 10.0 percent and 24 counties had rates below 12.0 percent. The highest unemployment rate in December was 26.8 percent in Imperial County. The comparable, not seasonally adjusted California rate was 10.9 percent in December.
- Nineteen of California's 58 counties recorded an unemployment rate decrease between November and December. Mono County experienced the largest rate decrease (down 2.1 percentage points to 9.1 percent). Imperial (down 1.7 percentage points) and Marin (down 0.5 percentage point) also experienced unemployment rate decreases of at least 0.5 percentage point. The statewide, not seasonally adjusted rate did not change over the month.
- The unemployment rate decreased over the year in all but one of California's 58 counties. Alpine recorded a year over increase in unemployment rate of 2.7 percentage points to 15.9 percent. The largest rate decrease was in San Benito (down 3.2 percentage points to 16.0 percent). The smallest rate decrease occurred in Mono (down 0.1 percentage point). The statewide, not seasonally adjusted rate decreased by 1.4 percentage points from December 2010 to December 2011
- Current monthly payroll employment estimates are reported for 49 sub-state areas in California. Sixteen of these areas recorded month over increases in nonfarm payrolls. The Riverside-San Bernardino-Ontario Metropolitan Statistical Area (MSA) experienced the largest gain (5,200 jobs). The largest month-over job loss was in the Oakland-Fremont-Hayward Metropolitan Division (MD) (3,900 jobs).
- Twenty-four areas recorded year-over employment gains, with the San Diego-Carlsbad-San Marcos MSA showing the largest job growth in absolute numbers, up 26,900 jobs (2.2 percent), and the Redding MSA with the largest percentage growth, up 4.0 percent (2,300 jobs). The Santa Rosa-Petaluma MSA recorded the greatest year-over job loss (2,800 jobs).
- Among the 10 California areas with more than 250,000 nonfarm jobs, December 2011 unemployment rates varied from a low of 7.3 percent in the San Francisco-San Mateo-Redwood City MD to a high of 16.2 percent in the Fresno MSA. Rates of year over change in nonfarm jobs ranged from an increase of 3.0 percent in the San Jose-Sunnyvale-Santa Clara MSA to an increase of 0.1 percent in the Oakland-Fremont-Hayward MD. (See charts below.)



Nonfarm Payroll Employment by California Area

(Number of Jobs, Not Seasonally Adjusted)

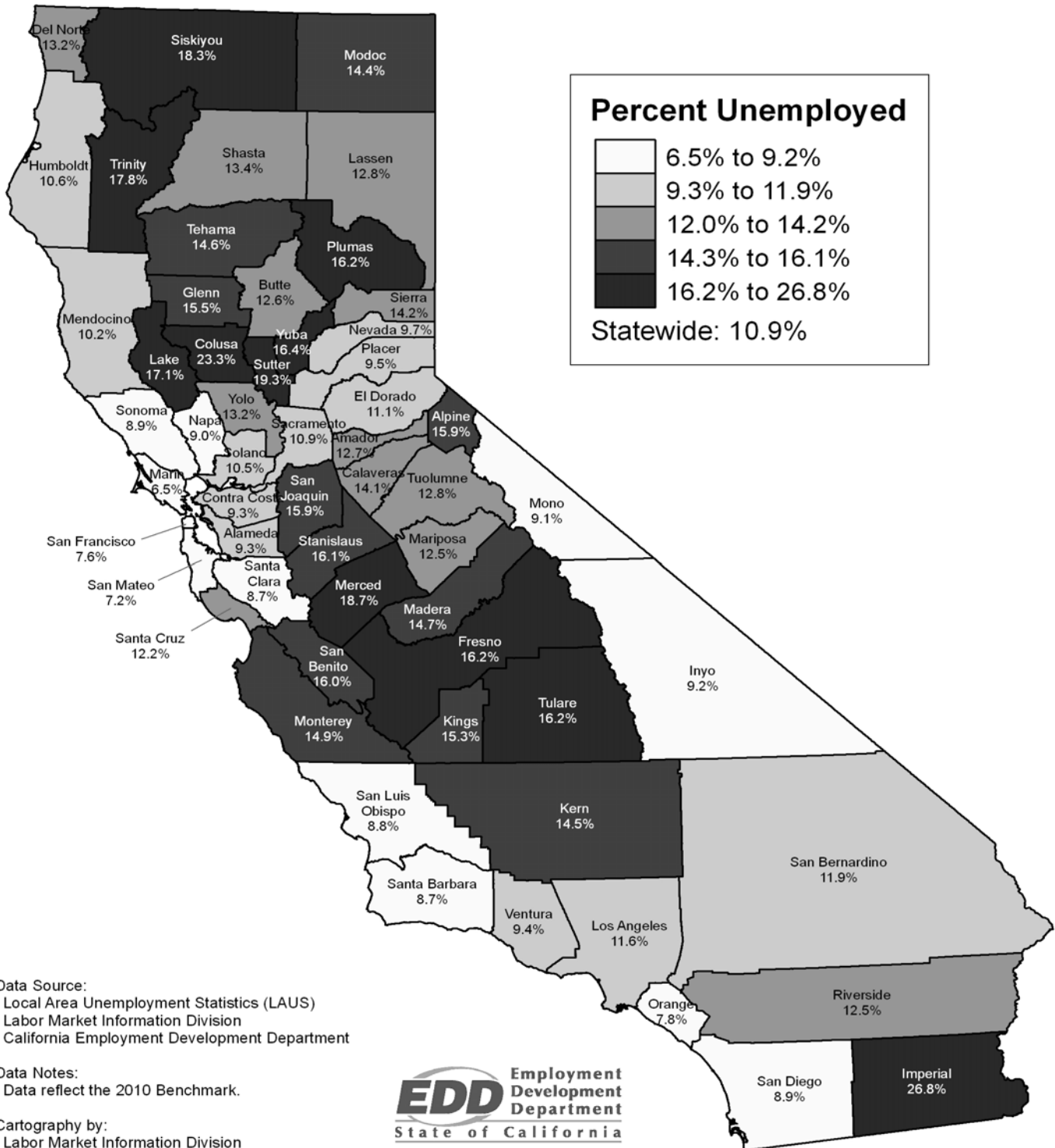
AREA	YEAR AGO	MONTH AGO	CURRENT	MONTH-OVER CHANGE		YEAR-OVER CHANGE		RANK BY
	Dec 10	Nov 11	Dec 11	Number	Percent	Number	Percent	Yr Over Pct
		<i>Revised</i>	<i>Preliminary</i>					
Statewide	14,078,100	14,305,600	14,320,100	14,500	0.1%	242,000	1.7%	
Sum of Areas	13,703,210	13,854,310	13,859,330	5,020	0.0%	156,120	1.1%	
Alpine County	760	680	700	20	2.9%	-60	-7.9%	49
Amador County	10,930	10,380	10,220	-160	-1.5%	-710	-6.5%	47
Bakersfield Delano MSA	227,000	232,700	232,600	-100	0.0%	5,600	2.5%	8
Calaveras County	7,510	7,240	7,320	80	1.1%	-190	-2.5%	38
Chico MSA	70,500	71,400	70,000	-1,400	-2.0%	-500	-0.7%	27
Colusa County	6,120	5,790	5,730	-60	-1.0%	-390	-6.4%	46
Del Norte County	7,760	7,690	7,640	-50	-0.7%	-120	-1.5%	32
El Centro MSA	44,500	45,200	45,100	-100	-0.2%	600	1.3%	18
Fresno MSA	281,600	283,100	282,200	-900	-0.3%	600	0.2%	23
Glenn County	5,940	6,090	6,040	-50	-0.8%	100	1.7%	14
Hanford-Corcoran MSA	35,600	36,900	36,700	-200	-0.5%	1,100	3.1%	5
Humboldt County	45,800	45,600	45,200	-400	-0.9%	-600	-1.3%	31
Inyo County	7,670	7,540	7,510	-30	-0.4%	-160	-2.1%	36
Lake County	11,700	11,490	11,480	-10	-0.1%	-220	-1.9%	35
Lassen County	10,020	9,750	9,690	-60	-0.6%	-330	-3.3%	41
Los Angeles-Long Beach-Glendale MD	3,814,100	3,822,500	3,826,100	3,600	0.1%	12,000	0.3%	22
Madera-Chowchilla MSA	32,700	32,200	31,800	-400	-1.2%	-900	-2.8%	39
Mariposa County	5,040	5,010	5,230	220	4.4%	190	3.8%	3
Mendocino County	27,630	27,660	27,440	-220	-0.8%	-190	-0.7%	26
Merced MSA	56,000	55,800	54,700	-1,100	-2.0%	-1,300	-2.3%	37
Modesto MSA	146,400	144,200	144,500	300	0.2%	-1,900	-1.3%	30
Modoc County	2,430	2,310	2,280	-30	-1.3%	-150	-6.2%	45
Mono County	7,310	6,170	6,970	800	13.0%	-340	-4.7%	42
Napa MSA	58,100	60,000	59,800	-200	-0.3%	1,700	2.9%	7
Nevada County	28,310	27,570	27,950	380	1.4%	-360	-1.3%	29
Oakland-Fremont-Hayward MD	952,800	957,800	953,900	-3,900	-0.4%	1,100	0.1%	24
Oxnard-Thousand Oaks-Ventura MSA	276,300	278,500	280,900	2,400	0.9%	4,600	1.7%	15
Plumas County	6,230	6,000	5,790	-210	-3.5%	-440	-7.1%	48
Redding MSA	57,500	59,700	59,800	100	0.2%	2,300	4.0%	1
Riverside-San Bernardino-Ontario MSA	1,119,400	1,137,100	1,142,300	5,200	0.5%	22,900	2.0%	11
Sacramento-Arden Arcade-Roseville MSA	802,900	812,500	809,000	-3,500	-0.4%	6,100	0.8%	19
Salinas MSA	120,100	123,700	122,000	-1,700	-1.4%	1,900	1.6%	16
San Diego-Carlsbad-San Marcos MSA	1,234,100	1,256,900	1,261,000	4,100	0.3%	26,900	2.2%	9
San Francisco-San Mateo-Redwood City MD	943,400	960,200	963,100	2,900	0.3%	19,700	2.1%	10
San Jose-Sunnyvale-Santa Clara MSA	864,200	889,000	889,900	900	0.1%	25,700	3.0%	6
San Luis Obispo-Paso Robles MSA	95,100	96,200	95,800	-400	-0.4%	700	0.7%	20
Santa Ana-Anaheim-Irvine MD	1,366,900	1,390,200	1,391,500	1,300	0.1%	24,600	1.8%	13
Santa Barbara-Santa Maria-Goleta MSA	162,000	162,400	162,000	-400	-0.2%	0	0.0%	25
Santa Cruz-Watsonville MSA	86,300	89,700	89,700	0	0.0%	3,400	3.9%	2
Santa Rosa-Petaluma MSA	171,500	169,400	168,700	-700	-0.4%	-2,800	-1.6%	34
Sierra County	620	630	610	-20	-3.2%	-10	-1.6%	33
Siskiyou County	11,400	11,190	10,850	-340	-3.0%	-550	-4.8%	43
Stockton MSA	188,500	191,500	192,100	600	0.3%	3,600	1.9%	12
Tehama County	13,680	13,390	13,290	-100	-0.7%	-390	-2.9%	40
Trinity County	2,660	2,610	2,530	-80	-3.1%	-130	-4.9%	44
Tuolumne County	15,690	15,720	15,560	-160	-1.0%	-130	-0.8%	28
Vallejo-Fairfield MSA	118,400	119,000	119,200	200	0.2%	800	0.7%	21
Visalia-Porterville MSA	105,600	108,000	107,200	-800	-0.7%	1,600	1.5%	17
Yuba City MSA	36,500	38,000	37,700	-300	-0.8%	1,200	3.3%	4

Data may not add to total due to rounding.

Source: EDD, Labor Market Information Division, Current Employment Statistics (CES) Program.

County Unemployment Rates

December 2011 (Not Seasonally Adjusted)



Percent Unemployed

- 6.5% to 9.2%
- 9.3% to 11.9%
- 12.0% to 14.2%
- 14.3% to 16.1%
- 16.2% to 26.8%

Statewide: 10.9%

Data Source:
Local Area Unemployment Statistics (LAUS)
Labor Market Information Division
California Employment Development Department

Data Notes:
Data reflect the 2010 Benchmark.

Cartography by:
Labor Market Information Division
California Employment Development Department
<http://www.labormarketinfo.edd.ca.gov>
January 2012



MONTHLY CIVILIAN LABOR FORCE DATA FOR COUNTIES
December 2011, and November 2011 and December 2010 (Revised); Not Seasonally Adjusted
2010 Benchmark

AREA / COUNTY	RANK	LABOR FORCE	EMPLOYMENT	UNEMPLOYMENT	RATE (%)	Nov 2011	Dec 2010
						Month-Ago	Year-Ago
CALIFORNIA	---	18,172,200	16,185,100	1,987,100	10.9%	10.9%	12.3%
ALAMEDA	13	750,400	680,400	69,900	9.3%	9.5%	10.8%
ALPINE	44	460	390	70	15.9%	15.3%	13.2%
AMADOR	29	16,200	14,140	2,070	12.7%	12.5%	13.4%
BUTTE	28	103,100	90,200	13,000	12.6%	12.1%	13.9%
CALAVERAS	35	19,210	16,490	2,710	14.1%	14.1%	16.0%
COLUSA	57	11,410	8,750	2,660	23.3%	19.7%	24.9%
CONTRA COSTA	13	519,400	470,900	48,500	9.3%	9.5%	10.8%
DEL NORTE	32	11,370	9,870	1,500	13.2%	13.1%	13.6%
EL DORADO	22	89,700	79,800	9,900	11.1%	10.8%	12.7%
FRESNO	48	431,400	361,600	69,700	16.2%	15.7%	17.4%
GLENN	43	12,590	10,640	1,960	15.5%	13.8%	17.4%
HUMBOLDT	20	59,900	53,600	6,300	10.6%	10.3%	11.5%
IMPERIAL	58	75,300	55,100	20,200	26.8%	28.5%	29.2%
INYO	12	9,350	8,490	860	9.2%	9.2%	10.1%
KERN	38	371,600	317,800	53,700	14.5%	13.4%	16.4%
KINGS	42	61,200	51,800	9,400	15.3%	14.6%	17.0%
LAKE	52	23,710	19,660	4,060	17.1%	16.9%	19.3%
LASSEN	30	13,080	11,400	1,680	12.8%	12.6%	14.3%
LOS ANGELES	23	4,865,300	4,301,600	563,700	11.6%	11.5%	12.6%
MADERA	40	65,200	55,600	9,600	14.7%	14.4%	16.2%
MARIN	1	133,200	124,500	8,700	6.5%	7.0%	7.8%
MARIPOSA	26	9,490	8,300	1,180	12.5%	11.8%	13.7%
MENDOCINO	18	41,830	37,560	4,270	10.2%	10.3%	11.6%
MERCED	55	103,700	84,300	19,400	18.7%	16.8%	19.9%
MODOC	37	3,860	3,310	560	14.4%	13.4%	15.0%
MONO	11	8,670	7,880	790	9.1%	11.2%	9.2%
MONTEREY	41	206,000	175,300	30,700	14.9%	11.0%	16.3%
NAPA	10	72,800	66,300	6,600	9.0%	8.7%	10.7%
NEVADA	17	49,940	45,080	4,870	9.7%	10.0%	11.2%
ORANGE	4	1,597,200	1,473,300	123,900	7.8%	8.1%	9.0%
PLACER	16	174,200	157,600	16,600	9.5%	9.8%	11.2%
PLUMAS	48	9,210	7,710	1,500	16.2%	14.6%	17.9%
RIVERSIDE	26	918,800	804,100	114,700	12.5%	12.8%	14.2%
SACRAMENTO	21	664,200	591,800	72,400	10.9%	11.0%	12.7%
SAN BENITO	46	26,400	22,200	4,200	16.0%	13.0%	19.2%
SAN BERNARDINO	24	859,600	756,900	102,600	11.9%	12.1%	13.7%
SAN DIEGO	8	1,586,000	1,445,100	141,000	8.9%	9.2%	10.1%
SAN FRANCISCO	3	463,300	428,000	35,200	7.6%	7.8%	9.1%
SAN JOAQUIN	44	298,000	250,500	47,500	15.9%	15.5%	18.1%
SAN LUIS OBISPO	7	133,500	121,700	11,800	8.8%	8.9%	10.0%
SAN MATEO	2	377,800	350,400	27,300	7.2%	7.5%	8.1%
SANTA BARBARA	5	217,500	198,600	18,900	8.7%	8.3%	9.7%
SANTA CLARA	5	889,500	812,200	77,400	8.7%	9.0%	10.3%
SANTA CRUZ	25	149,500	131,200	18,300	12.2%	10.8%	13.8%
SHASTA	34	84,000	72,700	11,300	13.4%	13.2%	16.1%
SIERRA	36	1,470	1,260	210	14.2%	13.8%	17.1%
SISKIYOU	54	17,900	14,620	3,280	18.3%	16.8%	19.6%
SOLANO	19	213,200	190,700	22,500	10.5%	10.5%	12.0%
SONOMA	8	250,700	228,400	22,300	8.9%	9.0%	10.0%
STANISLAUS	47	234,000	196,300	37,800	16.1%	15.4%	17.5%
SUTTER	56	42,600	34,400	8,200	19.3%	17.4%	21.2%
TEHAMA	39	24,150	20,620	3,530	14.6%	13.9%	15.6%
TRINITY	53	4,780	3,930	850	17.8%	16.6%	19.7%
TULARE	48	211,400	177,300	34,200	16.2%	15.0%	17.5%
TUOLUMNE	30	25,030	21,820	3,210	12.8%	12.4%	13.9%
VENTURA	15	432,400	391,900	40,500	9.4%	9.5%	10.7%
YOLO	32	98,900	85,800	13,100	13.2%	12.1%	14.3%
YUBA	51	27,700	23,100	4,600	16.4%	15.8%	19.4%

NOTE: Unemployment rates are calculated from unrounded labor force and unemployment level data.

NOTE: The 'RANK' assigned to each county is a whole number based on the ascending order of unemployment rates for the current month (e.g., the county with the lowest unemployment rate is assigned a 'RANK' of 1; conversely, the county with the highest rate is assigned a 'RANK' of 58).

SOURCE: EDD, Labor Market Information Division, Current Economic Statistics Group.

**CALIFORNIA LABOR MARKET INFORMATION
AND UNITED STATES UNEMPLOYMENT RATES**
SEASONALLY ADJUSTED
(IN THOUSANDS)

	JAN	FEB	MAR	APR	MAY	JUN	JUL	AUG	SEP	OCT	NOV	DEC	AVG
CALIFORNIA LABOR FORCE													
2002	17,254	17,268	17,268	17,257	17,239	17,224	17,218	17,225	17,244	17,267	17,288	17,304	17,255
2003	17,316	17,324	17,324	17,312	17,288	17,261	17,242	17,237	17,249	17,273	17,304	17,331	17,288
2004	17,348	17,355	17,354	17,349	17,341	17,336	17,342	17,359	17,384	17,412	17,435	17,454	17,655
2005	17,468	17,479	17,487	17,495	17,507	17,522	17,543	17,568	17,595	17,616	17,630	17,635	17,545
2006	17,607	17,609	17,615	17,623	17,630	17,640	17,657	17,686	17,728	17,777	17,822	17,856	17,688
2007	17,874	17,879	17,876	17,871	17,870	17,877	17,895	17,925	17,964	18,005	18,040	18,067	17,929
2008	18,087	18,103	18,120	18,139	18,160	18,184	18,208	18,229	18,249	18,268	18,282	18,290	18,193
2009	18,290	18,285	18,277	18,264	18,246	18,224	18,199	18,171	18,147	18,131	18,131	18,149	18,210
2010	18,177	18,204	18,217	18,214	18,196	18,173	18,154	18,146	18,146	18,147	18,148	18,151	18,173
2011	18,151	18,117	18,078	18,080	18,063	18,043	18,014	18,006	18,067	18,130	18,182	18,219	18,096
CALIFORNIA EMPLOYMENT													
2002	16,132	16,132	16,122	16,103	16,081	16,065	16,060	16,067	16,081	16,097	16,111	16,122	16,098
2003	16,130	16,136	16,133	16,116	16,086	16,056	16,038	16,041	16,065	16,105	16,150	16,189	16,104
2004	16,214	16,226	16,228	16,227	16,228	16,238	16,260	16,293	16,333	16,371	16,404	16,433	16,576
2005	16,459	16,484	16,507	16,530	16,553	16,577	16,602	16,630	16,659	16,686	16,711	16,730	16,594
2006	16,719	16,734	16,747	16,754	16,759	16,767	16,788	16,823	16,870	16,920	16,963	16,990	16,820
2007	16,999	16,994	16,980	16,962	16,945	16,935	16,934	16,945	16,965	16,988	17,006	17,019	16,973
2008	17,023	17,020	17,007	16,985	16,955	16,921	16,888	16,855	16,819	16,769	16,702	16,618	16,880
2009	16,524	16,432	16,348	16,273	16,202	16,135	16,072	16,017	15,974	15,943	15,927	15,926	16,148
2010	15,937	15,953	15,963	15,960	15,945	15,923	15,901	15,888	15,882	15,880	15,878	15,878	15,916
2011	15,905	15,916	15,902	15,939	15,947	15,910	15,848	15,831	15,916	16,008	16,125	16,198	15,954
CALIFORNIA UNEMPLOYMENT													
2002	1,122	1,136	1,146	1,153	1,158	1,158	1,158	1,159	1,163	1,170	1,177	1,182	1,157
2003	1,185	1,188	1,192	1,196	1,202	1,205	1,204	1,197	1,184	1,168	1,154	1,142	1,185
2004	1,134	1,129	1,126	1,121	1,112	1,099	1,082	1,065	1,052	1,041	1,031	1,021	1,080
2005	1,009	995	980	966	954	945	941	938	936	930	919	905	952
2006	888	875	868	869	872	873	869	863	858	857	860	866	868
2007	875	885	896	908	924	942	961	980	999	1,017	1,034	1,049	956
2008	1,064	1,083	1,112	1,153	1,205	1,263	1,320	1,374	1,431	1,499	1,580	1,672	1,313
2009	1,765	1,853	1,929	1,992	2,045	2,090	2,127	2,154	2,173	2,188	2,204	2,223	2,062
2010	2,240	2,251	2,255	2,254	2,251	2,250	2,252	2,258	2,264	2,267	2,270	2,273	2,257
2011	2,246	2,201	2,176	2,141	2,116	2,133	2,167	2,175	2,151	2,122	2,058	2,021	2,142
CALIFORNIA UNEMPLOYMENT RATES (%)													
2002	6.5	6.6	6.6	6.7	6.7	6.7	6.7	6.7	6.7	6.8	6.8	6.8	6.7
2003	6.8	6.9	6.9	6.9	7.0	7.0	7.0	6.9	6.9	6.8	6.7	6.6	6.7
2004	6.5	6.5	6.5	6.5	6.4	6.3	6.2	6.1	6.0	6.0	5.9	5.8	6.2
2005	5.8	5.7	5.6	5.5	5.4	5.4	5.4	5.3	5.3	5.3	5.2	5.1	5.4
2006	5.0	5.0	4.9	4.9	4.9	4.9	4.9	4.9	4.8	4.8	4.8	4.9	4.9
2007	4.9	5.0	5.0	5.1	5.2	5.3	5.4	5.5	5.6	5.7	5.7	5.8	5.3
2008	5.9	6.0	6.1	6.4	6.6	6.9	7.3	7.5	7.8	8.2	8.6	9.1	7.2
2009	9.7	10.1	10.6	10.9	11.2	11.5	11.7	11.9	12.0	12.1	12.2	12.2	11.3
2010	12.3	12.4	12.4	12.4	12.4	12.4	12.4	12.4	12.5	12.5	12.5	12.5	12.4
2011	12.4	12.1	12.0	11.8	11.7	11.8	12.0	12.1	11.9	11.7	11.3	11.1	11.8
UNITED STATES UNEMPLOYMENT RATES (%)													
2002	5.7	5.7	5.7	5.9	5.8	5.8	5.8	5.7	5.7	5.7	5.9	6.0	5.8
2003	5.8	5.9	5.9	6.0	6.1	6.3	6.2	6.1	6.1	6.0	5.8	5.7	6.0
2004	5.7	5.6	5.8	5.6	5.6	5.6	5.5	5.4	5.4	5.5	5.4	5.4	5.5
2005	5.3	5.4	5.2	5.2	5.1	5.0	5.0	4.9	5.0	5.0	5.0	4.9	5.1
2006	4.7	4.8	4.7	4.7	4.6	4.6	4.7	4.7	4.5	4.4	4.5	4.4	4.6
2007	4.6	4.5	4.4	4.5	4.4	4.6	4.7	4.6	4.7	4.7	4.7	5.0	4.6
2008	5.0	4.9	5.1	5.0	5.4	5.6	5.8	6.1	6.1	6.5	6.8	7.3	5.8
2009	7.8	8.3	8.7	8.9	9.4	9.5	9.5	9.6	9.8	10.0	9.9	9.9	9.3
2010	9.7	9.8	9.8	9.9	9.6	9.4	9.5	9.6	9.5	9.5	9.8	9.4	9.6
2011	9.1	9.0	8.9	9.0	9.0	9.1	9.1	9.1	9.0	8.9	8.7	8.5	9.0

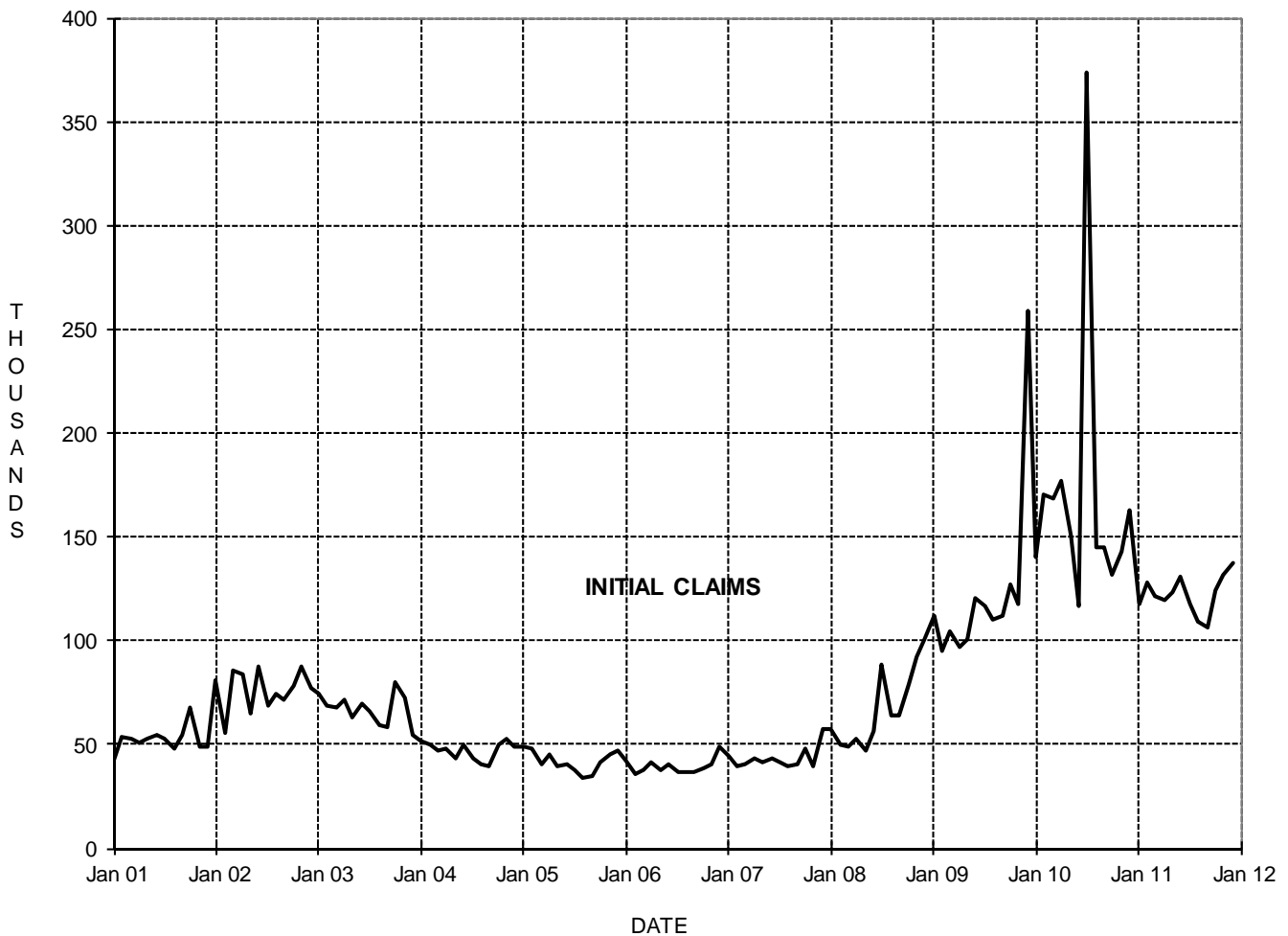
NOTE: The statewide labor force data presented here are derived from BLS-developed, time series regression models and are based on the 2010 Benchmark.

SOURCE: U. S. DEPARTMENT OF LABOR, Bureau of Labor Statistics.

More Initial Claims in December than in November

INITIAL CLAIMS FOR UNEMPLOYMENT INSURANCE (UI)
(FOR THE WEEK INCLUDING THE 19TH OF THE MONTH)
 (IN THOUSANDS)

	JAN	FEB	MAR	APR	MAY	JUN	JUL	AUG	SEP	OCT	NOV	DEC
2001	41.9	53.7	52.7	51.1	52.3	55.0	52.8	47.8	55.0	67.9	48.8	49.2
2002	80.9	56.0	85.3	84.0	64.7	88.0	68.9	74.0	71.6	78.1	87.9	77.0
2003	74.4	68.4	68.0	72.0	63.1	69.5	66.0	59.5	58.7	80.0	72.2	54.5
2004	51.6	50.0	47.0	47.6	42.9	49.8	43.5	40.5	39.7	50.1	52.6	48.7
2005	48.5	48.1	40.7	45.1	39.5	40.3	37.7	34.0	35.1	41.1	45.3	47.0
2006	42.5	35.4	37.9	41.8	37.3	40.6	36.7	36.5	36.7	38.2	40.8	49.4
2007	44.0	39.8	40.8	43.4	41.3	43.0	41.4	39.9	40.2	48.4	39.7	57.3
2008	57.6	49.6	48.6	52.6	47.3	56.6	88.2	64.3	63.8	78.8	92.3	100.6
2009	111.6	95.1	104.7	97.3	100.7	120.9	116.7	110.0	112.2	126.6	118.0	258.9
2010	139.9	170.4	168.3	176.8	150.2	117.0	373.4	145.3	144.5	131.8	143.0	162.4
2011	117.5	128.0	121.4	119.3	123.5	130.7	118.0	109.1	106.4	124.7	131.3	137.3



SOURCE: EDD, Unemployment Insurance Division, Program Analysis and Reporting Unit.

Weeks Claimed for Unemployment Insurance

TOTAL WEEKS CLAIMED FOR UNEMPLOYMENT INSURANCE (UI) * (FOR THE WEEK INCLUDING THE 19TH OF THE MONTH) (IN THOUSANDS)

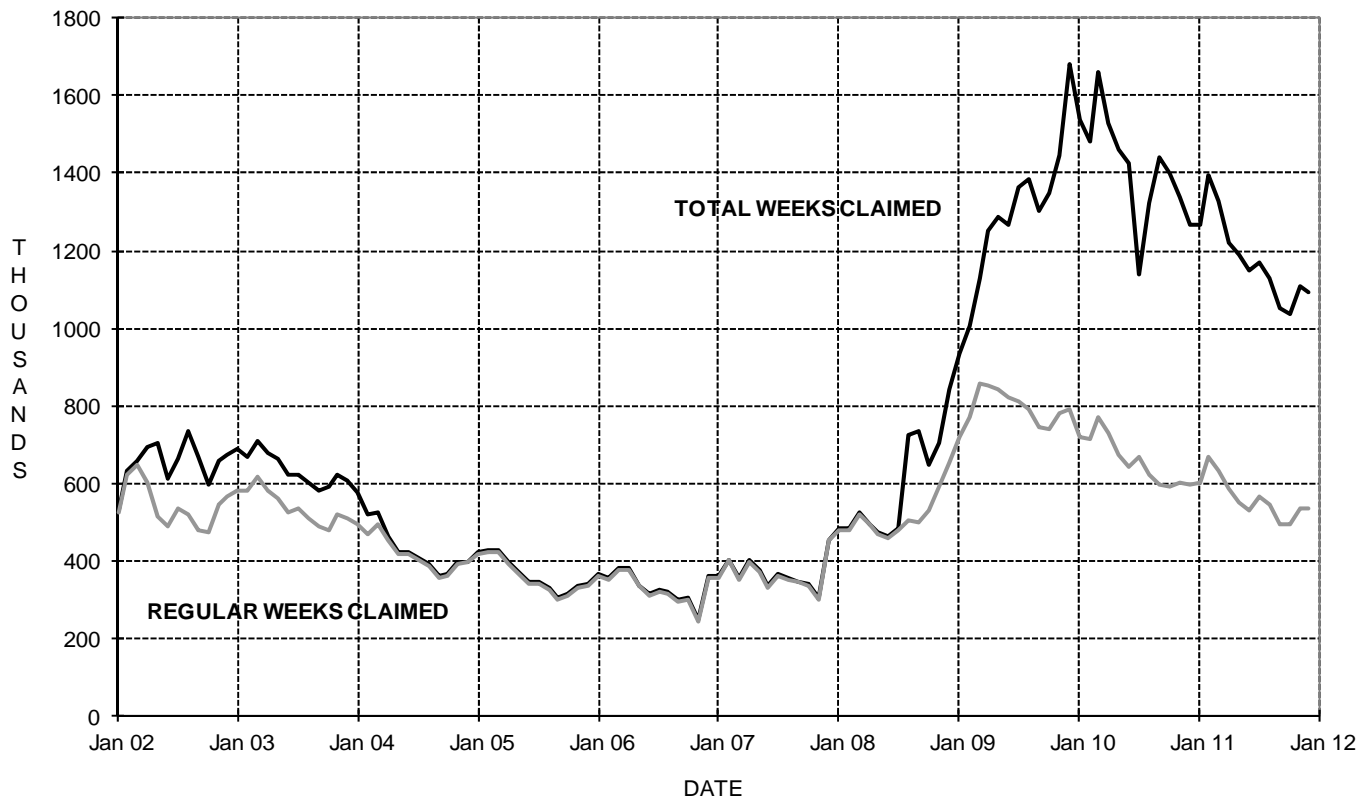
	JAN	FEB	MAR	APR	MAY	JUN	JUL	AUG	SEP	OCT	NOV	DEC
2002	530.0	630.3	656.9	693.8	703.9	612.6	662.1	733.6	666.3	596.3	656.2	672.2
2003	691.0	668.8	711.3	680.1	661.5	623.5	624.6	601.0	582.2	592.9	624.4	605.0
2004	574.5	518.3	523.1	464.3	424.8	424.6	406.2	391.4	363.8	365.1	395.3	399.7
2005	423.4	427.7	426.2	395.0	369.9	344.2	343.7	328.8	304.5	313.1	335.3	341.1
2006	364.6	356.9	383.1	379.4	338.1	313.6	324.0	321.0	300.2	305.8	247.6	361.3
2007	359.4	403.7	356.4	403.5	374.3	335.6	366.8	356.0	348.6	339.2	305.4	454.9
2008	484.6	484.1	522.9	496.6	472.3	461.7	485.1	723.3	736.6	645.6	705.8	843.4
2009	935.4	1,005.1	1,129.7	1,250.5	1,287.0	1,264.5	1,361.4	1,385.5	1,303.8	1,349.8	1,443.6	1,678.4
2010	1,537.1	1,479.3	1,659.4	1,529.4	1,461.3	1,425.2	1,137.1	1,321.8	1,442.8	1,401.9	1,340.0	1,268.4
2011	1,269.1	1,394.0	1,325.6	1,219.7	1,189.1	1,147.1	1,171.5	1,127.6	1,050.4	1,035.0	1,108.6	1,091.2

REGULAR WEEKS CLAIMED FOR UNEMPLOYMENT INSURANCE (UI) ** (FOR THE WEEK INCLUDING THE 19TH OF THE MONTH) (IN THOUSANDS)

	JAN	FEB	MAR	APR	MAY	JUN	JUL	AUG	SEP	OCT	NOV	DEC
2002	523.4	622.8	647.3	602.7	516.7	488.3	534.5	520.1	480.6	471.9	543.4	566.1
2003	580.6	578.9	614.8	581.6	558.8	524.6	536.7	510.0	488.1	481.0	519.2	510.3
2004	494.5	470.5	496.3	455.4	417.5	418.0	401.1	386.6	358.8	360.2	390.4	394.8
2005	418.9	422.7	420.9	389.7	364.7	339.5	339.5	324.6	300.1	308.6	330.5	336.3
2006	360.8	353.0	378.6	375.4	334.2	309.7	320.5	317.5	296.6	302.2	245.1	357.4
2007	356.0	400.4	352.7	399.2	370.1	331.7	363.1	352.7	345.2	335.9	302.6	451.1
2008	480.9	480.5	518.4	492.0	467.6	457.2	480.2	504.7	501.0	527.9	593.7	655.4
2009	717.5	768.8	858.8	853.6	840.0	820.4	812.2	790.1	744.9	740.3	781.4	792.8
2010	717.1	714.1	768.6	729.2	675.2	643.4	666.5	620.8	596.0	592.5	600.2	599.2
2011	603.9	666.3	630.8	584.1	553.0	528.9	566.4	543.1	494.9	494.8	536.3	536.4

* Effective December 21, 1991, total weeks claimed includes extended unemployment compensation claims.

** Excludes any special programs.



SOURCE: EDD, Unemployment Insurance Division, Program Analysis and Reporting Unit.

UNEMPLOYMENT INSURANCE (UI) INSURED UNEMPLOYMENT RATE *
(EXCLUDING EXTENDED BENEFIT PROGRAMS)
 (IN PERCENT)

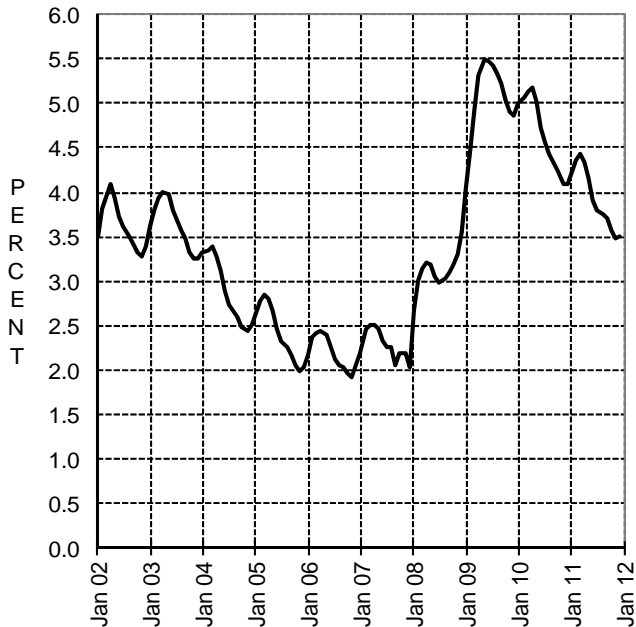
	JAN	FEB	MAR	APR	MAY	JUN	JUL	AUG	SEP	OCT	NOV	DEC
2002	3.50	3.83	3.96	4.08	3.94	3.73	3.61	3.50	3.41	3.32	3.28	3.39
2003	3.62	3.79	3.94	4.00	3.97	3.80	3.68	3.57	3.48	3.33	3.25	3.26
2004	3.33	3.34	3.38	3.27	3.13	2.89	2.73	2.67	2.59	2.48	2.43	2.51
2005	2.65	2.77	2.85	2.80	2.67	2.46	2.33	2.25	2.16	2.05	1.99	2.04
2006	2.17	2.38	2.42	2.44	2.39	2.25	2.12	2.06	2.03	1.97	1.92	2.06
2007	2.20	2.46	2.50	2.52	2.46	2.33	2.27	2.25	2.06	2.20	2.20	2.04
2008	2.66	3.00	3.14	3.21	3.19	3.06	2.99	3.02	3.09	3.18	3.30	3.55
2009	4.04	4.45	4.91	5.32	5.50	5.46	5.42	5.34	5.22	5.05	4.91	4.85
2010	4.99	5.07	5.14	5.18	5.01	4.73	4.56	4.44	4.35	4.24	4.09	4.08
2011	4.22	4.37	4.42	4.35	4.16	3.92	3.80	3.76	3.70	3.57	3.47	3.51

UNEMPLOYMENT INSURANCE (UI) FUND BALANCE
 (IN MILLIONS OF DOLLARS)

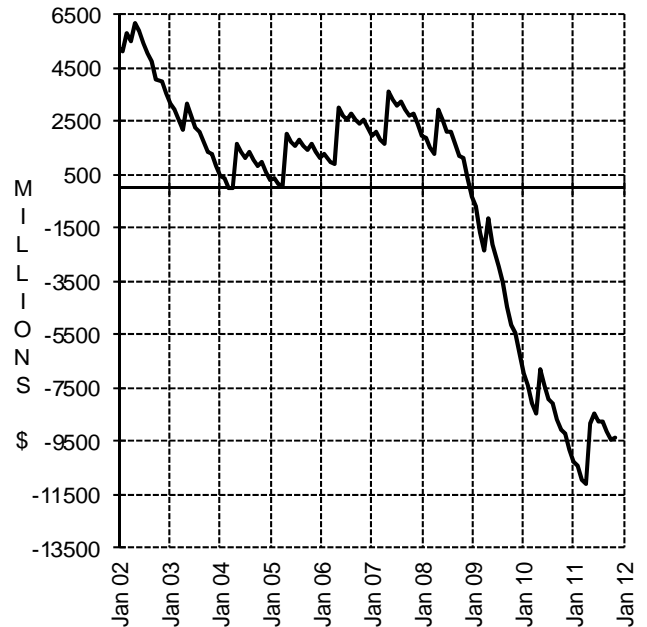
	JAN	FEB	MAR	APR	MAY	JUN	JUL	AUG	SEP	OCT	NOV	DEC
2002	5,269.3	5,125.4	5,755.8	5,452.3	6,137.1	5,827.7	5,433.0	5,026.3	4,711.5	4,079.6	3,967.5	3,562.7
2003	3,124.6	2,939.9	2,551.7	2,156.6	3,118.3	2,701.2	2,243.1	2,127.5	1,719.0	1,366.9	1,251.6	794.8
2004	460.0	391.4	-13.1	-27.5	1,681.9	1,322.4	1,087.4	1,313.1	1,017.5	826.5	951.1	568.1
2005	260.9	388.8	109.9	52.0	2,056.3	1,735.9	1,536.0	1,818.3	1,586.0	1,428.6	1,636.0	1,337.6
2006	1,114.2	1,271.9	979.3	901.0	2,971.8	2,711.4	2,525.1	2,773.7	2,579.2	2,415.7	2,555.3	2,254.1
2007	1,951.2	2,061.6	1,760.7	1,654.1	3,598.4	3,313.5	3,054.0	3,230.3	2,957.4	2,706.9	2,745.0	2,363.1
2008	1,941.2	1,898.9	1,493.9	1,235.3	2,960.5	2,532.7	2,125.8	2,124.3	1,646.0	1,221.4	1,092.5	326.2
2009	-347.0	-706.8	-1,648.2	-2,340.8	-1,131.0	-2,111.4	-2,989.2	-3,520.8	-4,428.7	-5,107.0	-5,473.6	-6,216.2
2010	-6,908.7	-7,379.6	-8,040.9	-8,486.2	-6,810.9	-7,411.9	-7,943.6	-8,091.0	-8,653.8	-9,075.2	-9,211.8	-9,786.5
2011	-10,283.5	-10,424.5	-10,921.7	-11,086.0	-8,834.4	-8,433.6	-8,782.1	-8,735.7	-9,098.1	-9,418.4	-9,371.6	#/NA

NOTE: #/NA indicates that data are not available at this time.

UI INSURED UNEMPLOYMENT RATE*



UI FUND BALANCE*



* The insured unemployment rate (IUR) is based on a ratio of a 13-week moving average of weeks of unemployment insurance benefits claimed divided by a 12-month moving average of covered employment. This ratio is used to trigger "on" and "off" various state and federal UI benefit extension programs. When the ratio exceeds five percent and has exceeded 120 percent of the average of the rates for the last two years, this triggers the federal extended benefits program to "on." This program allows individuals to receive additional unemployment benefits when they exhaust their regular benefit awards.

** The disbursements on the UI Fund Table reflect checks issued to claimants. The actual cash balance in the fund at any time is larger than the UI Fund Table Balance, due to the time lag in which these checks are actually redeemed.

UI Insured Unemployment Rate Source: EDD, Unemployment Insurance Division, Program Analysis and Reporting Unit.

UI Fund Balance Source: EDD, Fiscal Programs Division, Accounting Section.

Disability Insurance Program

TOTAL FIRST PAYMENTS AUTHORIZED FOR DISABILITY INSURANCE (DI) (IN THOUSANDS)

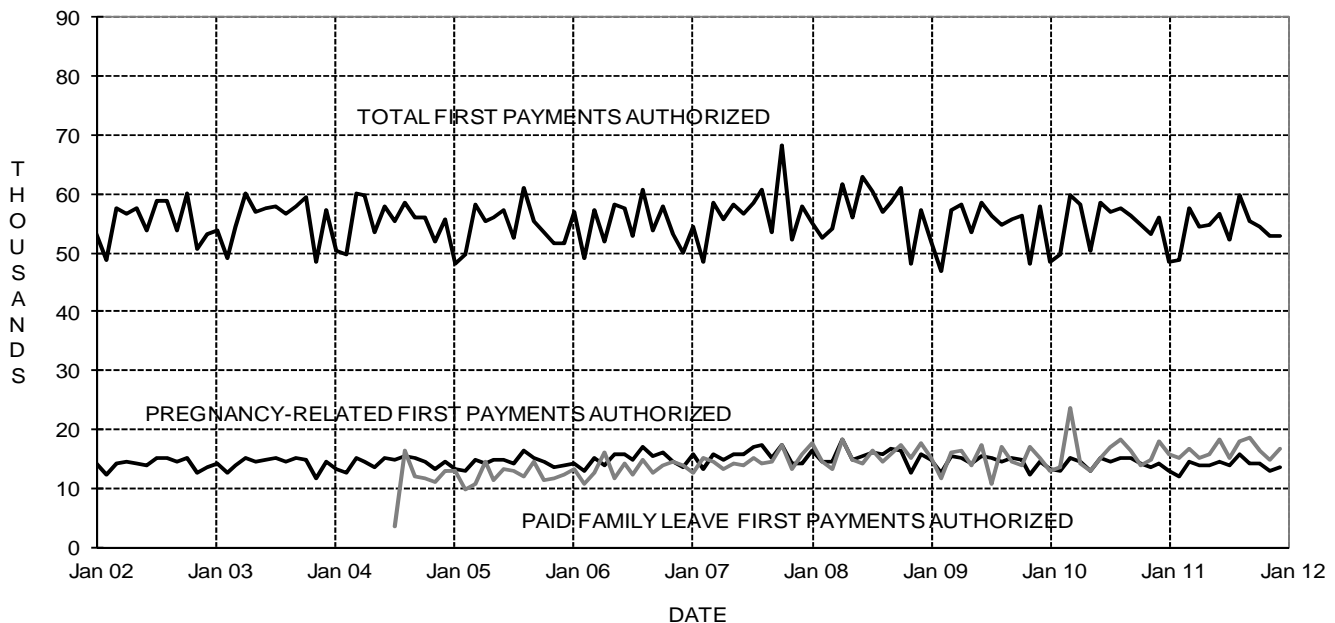
	JAN	FEB	MAR	APR	MAY	JUN	JUL	AUG	SEP	OCT	NOV	DEC
2002	53.3	48.8	57.7	56.7	57.7	53.9	58.7	58.8	53.8	60.2	50.8	53.2
2003	53.9	49.2	54.4	60.1	57.1	57.7	57.8	56.8	57.9	59.6	48.6	57.4
2004	50.3	49.6	60.1	59.7	53.5	57.9	55.3	58.4	56.1	55.9	51.9	55.6
2005	48.2	49.8	58.1	55.4	55.9	57.2	52.7	61.2	55.5	53.6	51.6	51.5
2006	57.0	49.0	57.4	51.9	58.3	57.6	52.9	60.8	53.8	57.9	53.2	50.1
2007	54.3	48.5	58.5	55.6	58.2	56.7	58.5	60.8	53.4	68.2	52.3	57.9
2008	55.1	52.6	54.0	61.8	56.1	62.9	60.4	57.0	58.6	61.1	48.3	57.3
2009	52.0	46.8	57.4	58.3	53.6	58.5	56.4	54.7	55.6	56.3	48.2	57.9
2010	48.5	49.6	59.7	58.3	50.3	58.6	57.0	57.5	56.4	54.9	53.2	56.1
2011	48.6	48.9	57.6	54.5	54.7	56.8	52.2	59.8	55.3	54.6	53.0	52.8

PREGNANCY-RELATED FIRST PAYMENTS AUTHORIZED FOR DISABILITY INSURANCE (DI) (IN THOUSANDS)

	JAN	FEB	MAR	APR	MAY	JUN	JUL	AUG	SEP	OCT	NOV	DEC
2002	14.2	12.2	14.2	14.6	14.2	13.9	15.3	15.0	14.6	15.1	12.5	13.6
2003	14.3	12.7	13.8	15.2	14.4	14.9	15.0	14.4	15.3	14.7	11.8	14.4
2004	13.4	12.6	15.0	14.5	13.5	15.2	14.7	15.6	15.0	14.5	13.4	14.6
2005	13.4	12.9	14.8	14.2	14.7	14.9	14.3	16.5	15.0	14.4	13.6	13.8
2006	14.2	13.0	15.1	13.9	15.8	15.7	14.9	16.9	15.4	16.2	14.4	13.7
2007	15.8	13.2	15.9	14.9	15.8	15.9	16.9	17.3	15.3	17.3	14.3	14.1
2008	16.3	14.5	14.6	18.4	14.8	15.6	16.2	15.9	16.7	16.4	12.6	15.7
2009	14.8	12.5	15.4	15.2	14.1	15.5	15.2	14.6	15.2	14.7	12.2	14.6
2010	13.2	12.8	15.2	14.5	12.8	15.0	14.6	15.0	15.0	14.1	13.7	14.2
2011	13.0	12.1	14.5	13.8	14.0	14.5	13.8	15.9	14.3	14.3	13.1	13.5

TOTAL FIRST PAYMENTS AUTHORIZED FOR PAID FAMILY LEAVE (PFL) (IN THOUSANDS)

	JAN	FEB	MAR	APR	MAY	JUN	JUL	AUG	SEP	OCT	NOV	DEC
2005	12.8	9.7	10.9	14.4	11.5	13.3	12.9	12.1	14.5	11.3	12.4	12.4
2006	13.3	10.9	12.5	16.2	11.6	14.2	12.2	14.9	12.6	13.9	14.4	14.0
2007	12.7	15.2	14.4	13.4	14.2	13.9	15.2	14.1	14.5	17.3	13.2	15.7
2008	17.8	14.4	13.3	18.4	14.9	14.1	16.5	14.6	15.7	17.5	15.1	17.8
2009	15.0	11.8	16.2	16.5	13.8	17.4	10.6	16.9	14.6	13.9	17.0	15.1
2010	13.1	13.6	23.6	14.1	13.1	15.1	16.9	18.3	16.5	14.0	14.7	17.9
2011	15.8	15.0	16.6	15.1	15.7	18.2	15.0	17.9	18.7	16.4	14.9	16.6

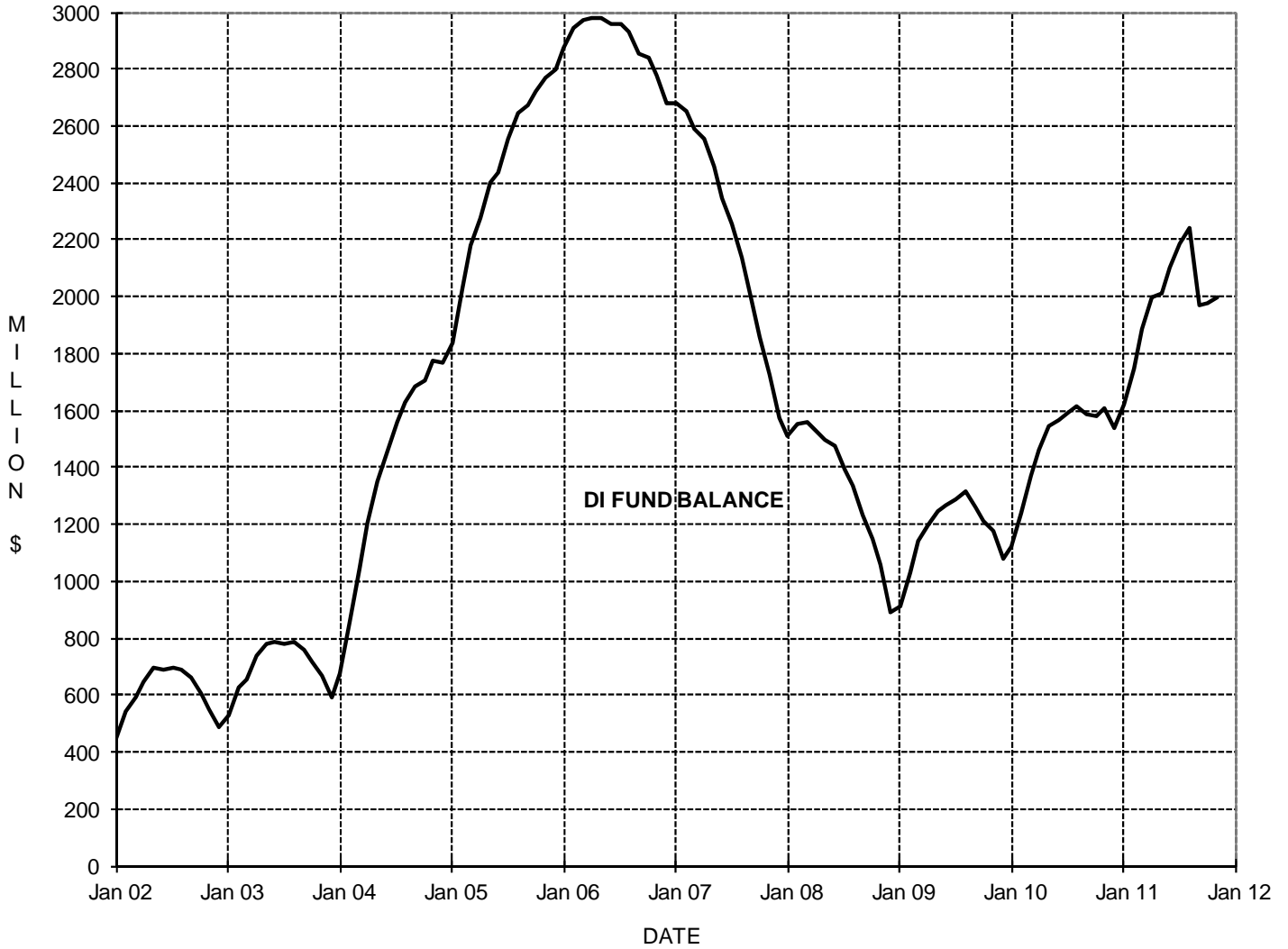


SOURCE: EDD, Disability Insurance Branch, Program Data & Research Unit.
Note: Paid Family Leave started in July 2004 (http://www.edd.ca.gov/Disability/Paid_Family_Leave.htm)

DISABILITY INSURANCE (DI) FUND BALANCE
(IN MILLIONS OF DOLLARS)

	JAN	FEB	MAR	APR	MAY	JUN	JUL	AUG	SEP	OCT	NOV	DEC
2002	445.7	546.0	593.1	646.1	694.2	687.5	696.3	687.3	659.1	604.0	551.9	487.0
2003	530.6	624.0	655.3	740.0	781.4	783.2	776.6	785.6	757.4	715.8	671.6	593.0
2004	675.9	859.5	1,045.9	1,204.3	1,347.9	1,456.3	1,557.4	1,631.4	1,686.3	1,703.3	1,775.5	1,770.2
2005	1,837.3	2,035.3	2,178.9	2,278.7	2,404.6	2,438.4	2,551.3	2,644.5	2,671.0	2,723.2	2,767.4	2,796.2
2006	2,875.4	2,945.5	2,969.6	2,978.5	2,976.3	2,955.9	2,954.8	2,930.2	2,854.2	2,843.1	2,779.8	2,678.0
2007	2,680.3	2,654.4	2,592.6	2,553.4	2,460.0	2,344.5	2,258.2	2,138.9	1,983.8	1,857.1	1,724.3	1,570.6
2008	1,510.0	1,554.7	1,560.1	1,531.1	1,498.9	1,472.6	1,394.9	1,339.0	1,231.5	1,147.3	1,057.6	894.3
2009	908.7	1,033.4	1,138.3	1,199.4	1,244.7	1,268.9	1,288.5	1,312.1	1,261.3	1,212.9	1,178.7	1,075.9
2010	1,117.7	1,241.2	1,370.0	1,465.2	1,542.7	1,569.4	1,590.7	1,614.6	1,584.2	1,577.3	1,605.5	1,540.9
2011	1,618.4	1,748.6	1,883.4	1,997.1	2,014.4	2,102.5	2,184.1	2,237.9	1,970.1	1,976.4	1,995.0	#N/A

NOTE: #N/A indicates that data are not available at this time.



SOURCE: EDD, Fiscal Programs Division, Accounting Section.

GLOSSARY

Current Population Survey (CPS) or “Household Survey”. The monthly survey of households from which are derived estimates of civilian labor force, employment, unemployment, and unemployment rate for Los Angeles County and the Balance of California. The CPS is a stratified random sample conducted by the Bureau of the Census for the Bureau of Labor Statistics (BLS).

Employment, Civilian. As measured by the Current Population Survey (CPS), consists of civilian or noninstitutional workers 16 years of age and older who (a) during the survey week, worked as paid employees, or in their own business or farm or profession, or who worked 15 hours or more as unpaid workers in a family enterprise, and (b) were not working but who had jobs or businesses from which they were temporarily absent because of illness, inclement weather, vacation, work stoppage or labor management dispute, or personal reasons, whether or not they were paid for the time-off.

Hispanic. An ethnic classification that includes persons of Mexican, Puerto Rican, Cuban, or any other nationality based on the Spanish cultures or languages; persons of Hispanic origin may be of any race.

Hours of Work. The number of hours worked during the survey week. Persons who worked at least 35 hours during the survey week are designated as full-time; persons who worked less than 35 hours are considered part-time.

Labor Force, Civilian. Those individuals, 16 years of age and older, who were working or actively seeking work during the survey week; also, the aggregation of civilian employment and civilian unemployment.

Labor Force Participation Rate. The civilian labor force expressed as a percentage of the civilian noninstitutional population.

Nonfarm (Nonagricultural) Wage and Salary Employment. The count of all full-time and part-time employees (including employees on paid vacation or paid sick leave), by industry, who worked in or received compensation from nonfarm establishments for any part of the pay period including the 12th of the month; employees involved in labor management disputes are not included. Hours and earnings data by industry are also collected as part of this survey.

Population, Civilian. As defined by the Current Population Survey (CPS), includes persons 16 years of age and older who reside in the 50 United States, and are not institutionalized or on active duty in the Armed Forces.

Race. The Current Population Survey (CPS) requests the respondent to identify the race of all members of the household, 16 years of age and older. The three racial categories identified on the survey instrument are White, Black, and Other.

Black - A racial classification for persons with origins related to any of the black racial groups of Africa.

Other - The “Other” racial group includes Asians and Pacific Islanders, as well as native americans such as American Indians and Alaskan Natives.

White - A racial classification for persons with origins related to any of the original peoples of Europe, North Africa, or the Middle East.

Seasonal Adjustment. The removal of the effects of regular periodic events such as weather conditions, holidays, and school schedules from labor force and payroll employment data. The X-12 ARIMA is the Bureau of Labor Statistics (BLS) recommended seasonal adjustment program used to seasonally adjust these time series data.

Survey Week. Refers to the week, each month, that includes the 12th during which the Current Population Survey (CPS) is conducted.

Unemployment, Civilian. Comprised of noninstitutionalized civilians who did not work but made specific efforts to find a job within the past four weeks and were available for work (except for temporary illness) during the survey week. Also included as unemployed are those who did not work but were available for work and (a) were waiting to be recalled to a job from which they had been laid off or (b) waiting to begin a new job within thirty days. (See also Unemployment, Duration of and Reasons for.)

Unemployment, Duration of. The length of time (including the current survey week) during which they have been classified as unemployed and looking for work. For persons on layoff, duration of unemployment represents the number of weeks since the termination of their most recent employment.

Unemployment, Reasons for. The unemployed are classified into one of four major groups:

Job losers - Persons whose employment ended involuntarily and who immediately began looking for work.

Job leavers - Persons who quit their job or otherwise terminated their employment voluntarily and immediately began looking for work.

Re-entrants - Persons who worked previously but have been out of the labor force for a period of time before actively seeking work again.

New entrants - Persons who are seeking employment for the first time (i.e., they have never previously held a job).

Unemployment Rate. The number of unemployed individuals expressed as a percentage of the civilian labor force.

NOTE TO OUR READERS:

The Employment Development Department's Labor Market Information Division (LMID) collects the labor market information presented in this report on a monthly basis, as an agent for the United States Department of Labor, Bureau of Labor Statistics (BLS).

Information presented is derived from BLS labor force models, Current Population Survey (CPS), Local Area Unemployment Statistics (LAUS), or the Current Employment Statistics (CES) survey.

The CPS measures levels of employment and unemployment through a statewide monthly survey of approximately 5,500 households. This survey collects information on the employment status of each member of these households, 16 years of age and over. **Members of these households who are working at more than one job are counted as employed only once.** The data reflect the county where the person lives.

The CES survey contacts approximately 42,000 businesses in California each month and collects information as to the number of jobs on the payroll for that month. **Individuals who hold more than one job are counted once for each job.** The data reflect the county where the job is located. These data, which present employment by industry division, are commonly referred to as the "establishment survey" or the "wage and salary employment series." Each month the CES Program releases "Preliminary" employment and hours and earnings data for the prior month; also, "Revised" data are published for the month preceding the prior month. Once LMID and BLS have verified the "Revised" data, they remain unchanged until the new benchmark is completed in March of the following year.

The LAUS county data are estimated using a BLS prescribed multi-step estimation process, incorporating a variety of information including, but not limited to, CES survey data, agricultural employment, and unemployment claims data for local areas. The estimates of county employment/unemployment are adjusted so that all areas add to the statewide total, which is derived from BLS-developed regression models. The data reflect the county where the person lives.

Seasonally adjusted labor force data are depicted in some charts. The seasonal adjustment process is used to remove typical seasonal employment fluctuations from a time series. Seasonal activities, which affect employment, occur at various times throughout the year (e.g., additional hiring by retail stores during the Christmas season).

This publication is available in PDF at
www.labormarketinfo.edd.ca.gov

Want to subscribe to the California Labor Market Review? Here's how.

To be added to our mail or e-mail distribution list, complete the order form and mail it to the address provided below. Please indicate your preference: E-mail Mail

Name

Company

Address

City State Zip Code

Telephone

Fax

Mail completed form to:

Publication Order (CES)
Employment Development Department
7000 Franklin Blvd., Suite 1100
Sacramento, CA 95823

Or fax to: 1-800-765-3387

E-mail

→ (Provide e-mail address for electronic distribution.)



STATE OF CALIFORNIA

LABOR AND WORKFORCE DEVELOPMENT AGENCY

EMPLOYMENT DEVELOPMENT DEPARTMENT

The California State Employment Development Department (EDD) is a recipient of federal and state funds, is an equal opportunity employer/program, and is in compliance with Section 504 of the Rehabilitation Act and the Americans with Disabilities Act (ADA).
Special requests for alternate formats need to be made by calling 916-262-2162.

